

Open Cut Machine Parts



About ROX

ROX Mining Parts is a division of the Bend-tech Group dedicated to the supply of Open cut and Underground machine replacement parts. ROX is committed to eliminating downtime, improving performance, and increasing longevity of parts through innovation.

The ROX team has been restructured with customer experience in mind and with dedicated supporting departments such as research and development, engineering, and logistics, the ROX division is poised to transform mining parts supply.



**“Eliminate downtime,
maximise performance”**

index

Caterpillar D10T Dozer	4	Caterpillar 793 Haul Truck	21
Caterpillar D11T Dozer	8	Caterpillar 854K Wheel Dozer	26
Caterpillar 16M Grader	11	Caterpillar 994H Wheel Loader	28
Caterpillar 24M Grader	13	Fuel Tank Rotable Program	31
Caterpillar 777F Haul Truck	15	Hitachi EX1900 Excavator	34
Caterpillar 785D Haul Truck	17	Hitachi EX2500 Excavator	39
Caterpillar 789 Haul Truck	19	Hitachi EX3600 Excavator	42



index

<u>Hitachi EX5600 Excavator</u>	48	<u>Komatsu 930E Dump Truck</u>	63
<u>Hitachi EX8000 Excavator</u>	53	<u>Komatsu WA1200 Wheel Loader</u>	64
<u>Epiroc D65 Surface Drill</u>	59	<u>Komatsu PC5500 Excavator</u>	65
<u>Komatsu Machine Range</u>	61	<u>LeTourneau L1850 Wheel Loader</u>	66
<u>Komatsu 830E Dump Truck</u>	62	<u>Liebherr 9400 Excavator</u>	68



Caterpillar D10T Dozer



ROX | OPEN CUT MACHINE PARTS



bendtechgroup.com.au

OPEN CUT | UNDERGROUND | A DIVISION OF *Bendtech*.

Caterpillar D10T Dozer

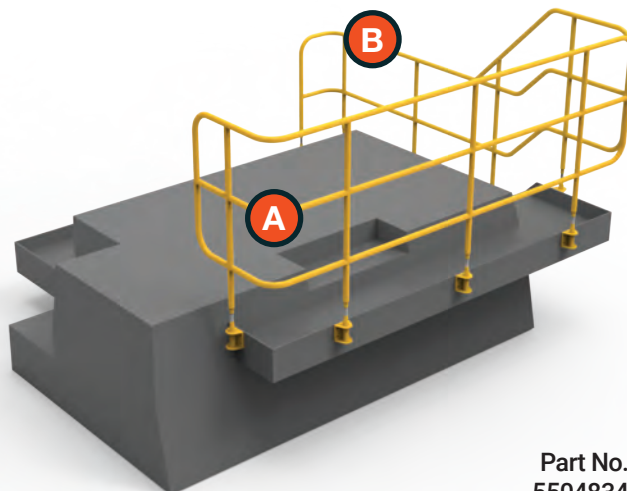


Caterpillar D10/D11 Track Handrail

Part: 5501429

Construction: Heavy-duty aluminium

- Certified and compliant with Australian Standards
- Fully adjustable



Part No.
5504834

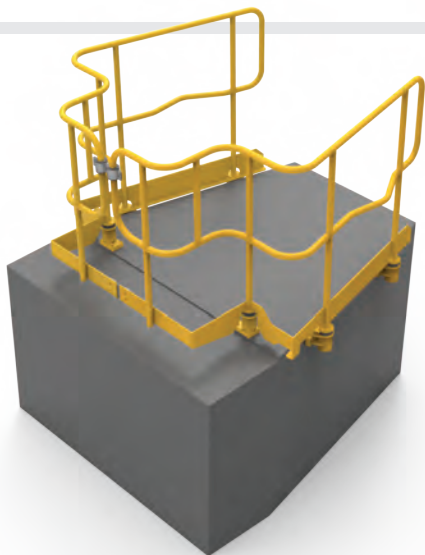
Caterpillar D10T Rear Handrails

Parts: Handrail A: 5600494, Handrail B: 5600495

A comprehensive set of handrails designed and engineered to provide fall protection on the rear of the Caterpillar D10T dozer.

Construction: Heavy-duty steel

- Improved design over OEM
- Shock absorbing mounts



Caterpillar D10T Drop-in Bonnet Handrails

Part: 5504947

A comprehensive set of handrails designed and engineered to provide fall protection on the bonnet of the Caterpillar D10T Dozer. Drop-in handrails for temporary maintenance.

Construction: Heavy-duty steel

- Mounts sold separately for ease of fleet implementation
- 2 piece design for ease of fitment
- Components available on request



Caterpillar D10T Fixed Bonnet Handrails

Part: 5504835

A comprehensive set of fixed handrails designed and engineered to provide fall protection on the bonnet of the Caterpillar D10T dozer.

Construction: Heavy-duty steel

- Shock absorbing mounts
- Bolt-in handrails for a fixed maintenance solution



Caterpillar D10T Dozer



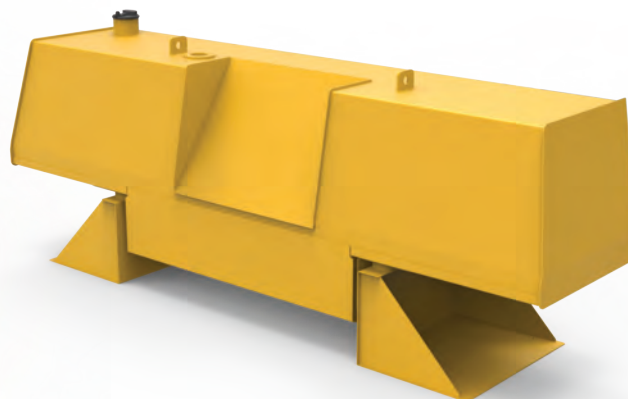
Caterpillar D10T Bonnet/Hood

Part: 5600597

OEM No. 371-4122

Construction: Heavy-duty steel

- Direct bolt-on replacement for the Caterpillar D10T bonnet/hood. Stocked and ready for despatch.



Caterpillar D10T Fuel Tank

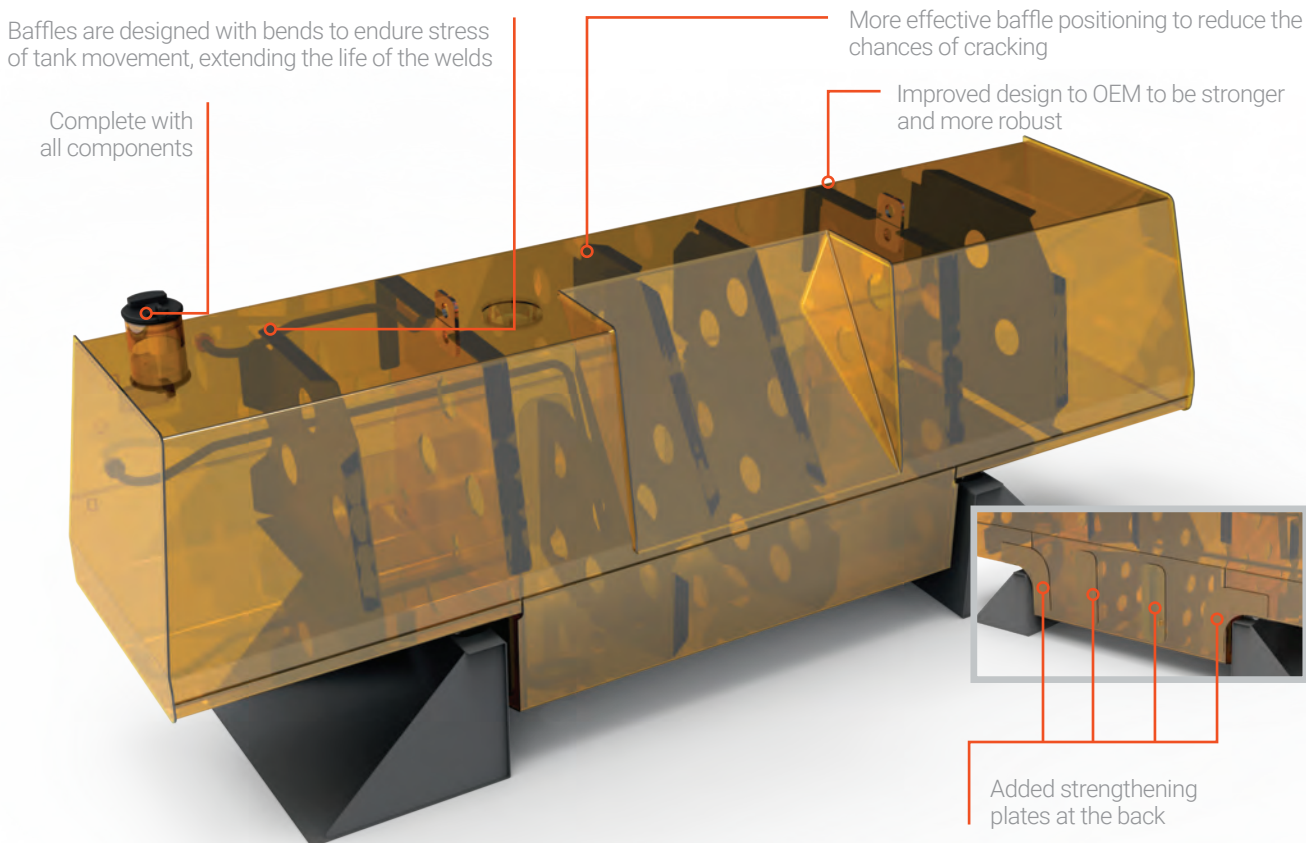
Part: 5600595

OEM No. 339-3376

A cost-effective replacement for the Caterpillar D10T fuel tank complete with all components

Construction: Heavy-duty steel

- Improved design to OEM to be stronger and more robust
- More effective baffle positioning
- Custom fuel filling system
- Available for Bend-tech's Rotable Strip and Assess Program (see page 31)



Caterpillar D10T Dozer

Caterpillar D10T2 Drop-in Bonnet Handrails

Part: 5506668

A comprehensive set of drop-in handrails designed and engineered to provide fall protection on the bonnet of the Caterpillar D10T2 dozer.

Construction: Heavy-duty steel

Features:

- Shock absorbing mounts
- Drop-in handrail for temporary maintenance
- 2 piece design for ease of fitment
- Certified and compliant with Australian Standards



Caterpillar D11T Dozer



ROX | OPEN CUT MACHINE PARTS



bendtechgroup.com.au

OPEN CUT | UNDERGROUND | A DIVISION OF *Bendtech*.

Caterpillar D11T Dozer



Caterpillar D11T Drop-in Bonnet Handrails

Part: 5506300

A comprehensive set of handrails designed and engineered to provide fall protection on the bonnet of the Caterpillar D11T Dozer. Drop-in handrails for temporary maintenance.

Construction: Heavy-duty steel

- Mounts sold separately for ease of fleet implementation
- 2 piece design for ease of fitment
- Components available on request



Caterpillar D11T Fixed Bonnet Handrails

Part: 5505157

A comprehensive set of fixed handrails designed and engineered to provide fall protection on the bonnet of the Caterpillar D11T dozer.

Construction: Heavy-duty steel

- Shock absorbing mounts
- Bolt-in handrails for a fixed maintenance solution



Caterpillar D11T Chassis Handrails

Part: 5502252

Construction: Heavy-duty aluminium

Height: 1800mm

- Clamps to chassis with hand bolts
- Powder coated in Y-14 safety yellow



Caterpillar D11T Bolt-on Bonnet Handrails

Part: 5505157

A comprehensive set of bolt-on handrails designed and engineered to provide fall protection on the bonnet of the Caterpillar D11T dozer.

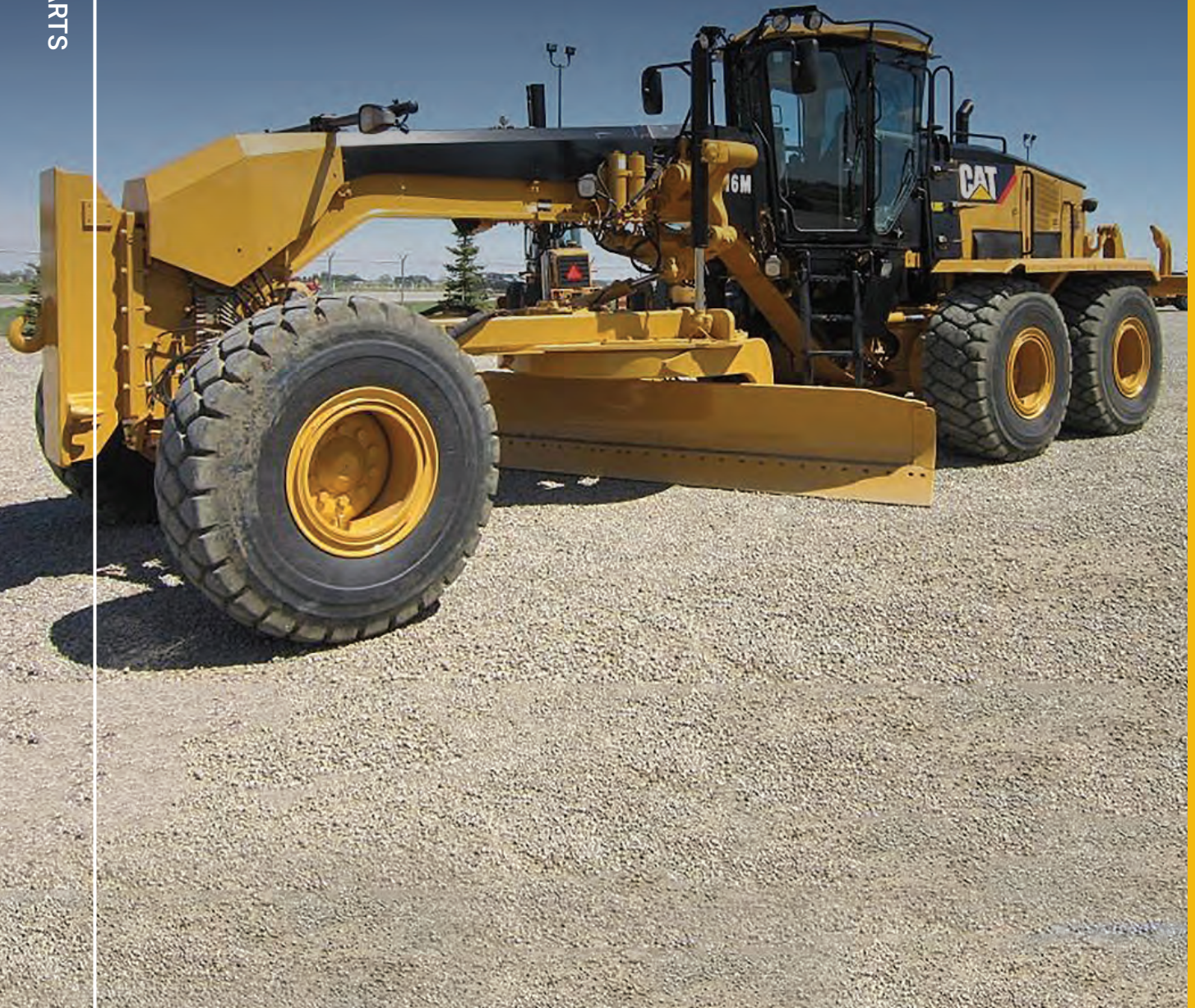
Construction: Heavy-duty steel

Features:

- LH and RH handrail with swing gate
- Finished in safety yellow
- Rubber bushes for vibrations



Caterpillar 16M Grader



Caterpillar 16M Grader

Caterpillar 16M Rear Mud Guard Set

Part: 5505470

OEM No. 328-5399

Rear fenders with railings and steps fit onto a Caterpillar 16M (replacing the OEM rear fenders or adding fenders where there is none), to provide easier and safer access to the rear of the machine.

Construction: Heavy-duty steel

Features:

- Finished in Y-14 safety yellow
- Safety handrails



Caterpillar 16M Rear Mud Guard
Mounting Kit – Part: 5606913

“Eliminate downtime,
maximise performance”



Caterpillar 24M Grader



Caterpillar 24M Grader

Caterpillar 24M Grader Emergency Access Ladder

Part: 5502411

Construction: Heavy-duty steel
and aluminium
WLL: 150kg

Features:

- Gas struts for controlled release and easy lifting
- Easy-to-use latching system
- Fully TIG welded ladder construction
- Steel section finished in Y-14 Safety Yellow
- Non-slip nosing's on ladder treads



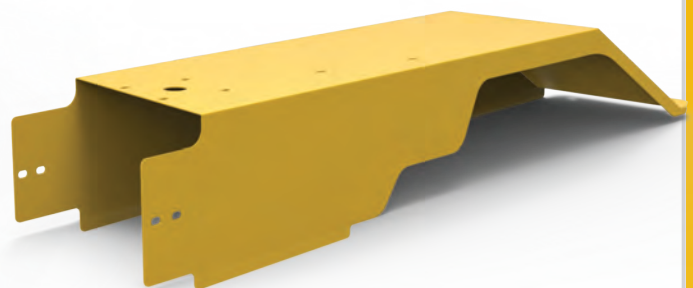
Caterpillar 24M Cover Plate Left

Part: 5502412

OEM 316-2323

A side cover plate to suit the left hand side of a Caterpillar 24M, designed to protect hydraulic hoses and electrical wiring on the front chassis frame.

Construction: Heavy-duty steel



Caterpillar 24M Cover Plate Left

Part: 5502413

OEM 316-2322

A side cover plate to suit the right hand side of a Caterpillar 24M, designed to protect hydraulic hoses and electrical wiring on the front chassis frame.

Construction: Heavy-duty steel



Caterpillar 777 Haul Truck



Caterpillar 777 Haul Truck

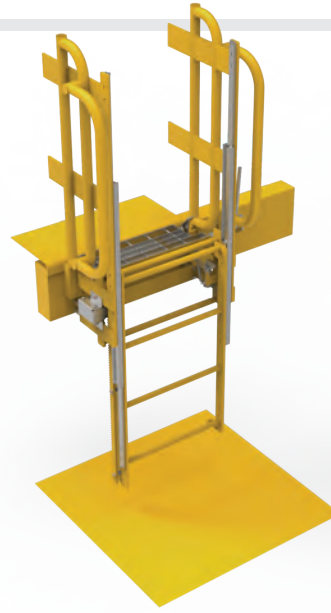
Caterpillar 777 Emergency Egress Ladder

Part: 5502447

Construction: Heavy-duty steel and aluminium

Features:

- High strength aluminium ladder and slides
- Heavy duty steel main frame
- Torqued gear units for controlled release and easy lifting
- *Patent pending



Caterpillar 777F Watercart Chassis Handrail Kit

Part: 5503417

Construction: Heavy-duty steel and aluminium

Height: 1050mm

Length: 2930mm

Features:

- Lightweight for easy install
- Fitted with heavy-duty fixings to lock to the chassis



Caterpillar 777F Fuel Tank

Part: 5601040

OEM No. 219-9712

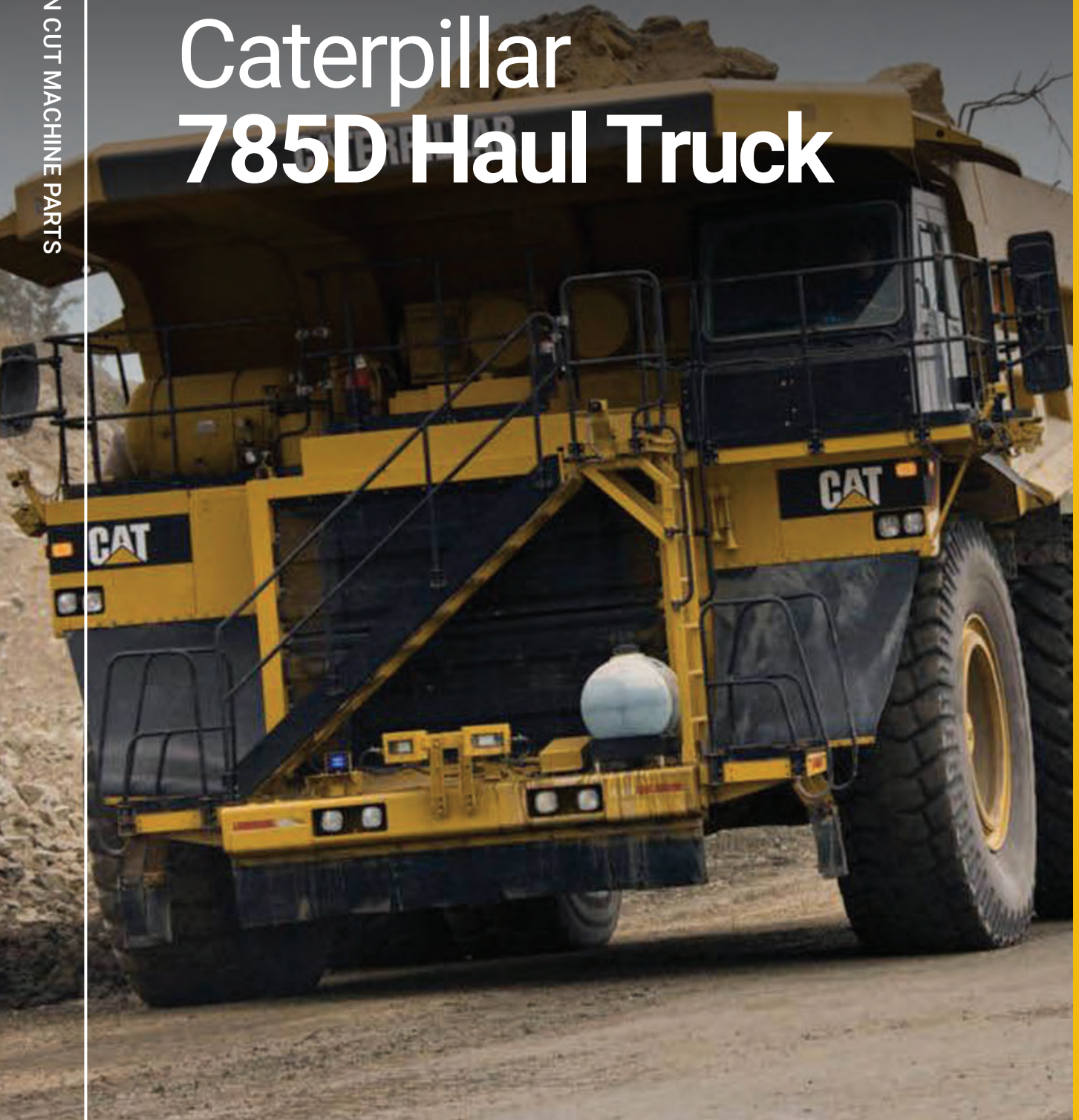
Construction: Heavy-duty steel

Features:

- Blasted and coated in high-performance Armour Flex Coating
- Eliminates the need for bash plates, one of the key enablers of corrosion
- Available for Bend-tech's Rotable Strip and Assess Program (see page 31)



Caterpillar 785D Haul Truck



Caterpillar 785D Haul Truck

Caterpillar 785D Water Cart Handrails

Part: 5501232

Caterpillar 785D water cart handrails designed and engineered for safe, efficient and easy maintenance.

Construction: Heavy-duty steel

Features:

- Certified and compliant with Australian Standards
- Finished in Y-14 Safety Yellow



Caterpillar 785C/D Fuel Tank

Part: 5607174

OEM No. 434-0955

Construction: Heavy-duty steel

Features:

- Blasted and coated in high-performance Armour Flex Coating
- Eliminates the need for bash plates, one of the key enablers of corrosion



Caterpillar 789 Haul Truck



Caterpillar 789 Haul Truck

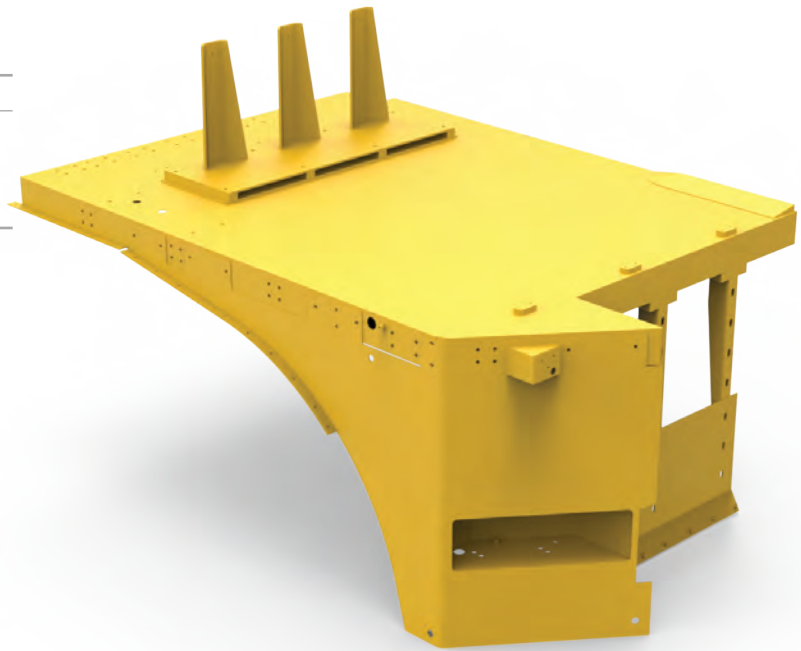
Caterpillar 789D RH Corner Module

Part: 5600542

Construction: Heavy-duty steel

Features:

- Finished in CAT yellow
- LH Corner Module also available
- Certified and compliant with Australian Standards



Caterpillar 789D Fuel Tank

Part: 5601051

Construction: Heavy-duty steel

Features:

- Available for Bend-tech's Rotable Strip and Assess Program (see page 31)
- New tank available on request



Caterpillar 793 Haul Truck



Caterpillar 793 Haul Truck

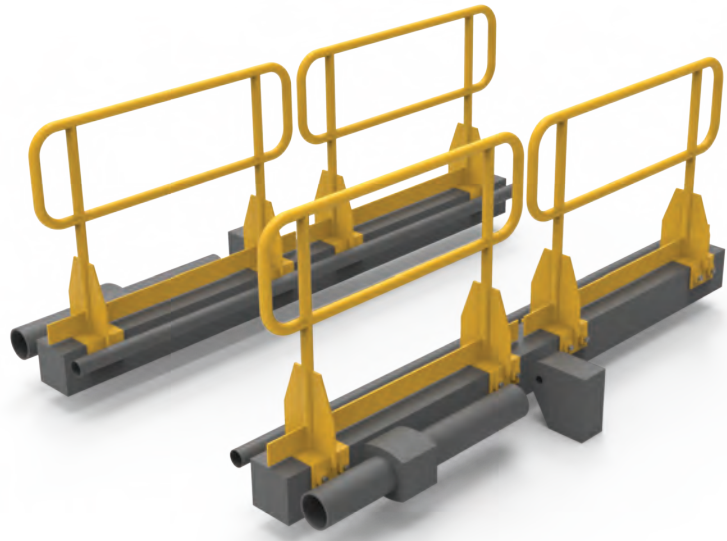
Caterpillar 793C Chassis Handrail Set

Part: 5503265

Construction: Heavy-duty aluminium
Height: 1050mm

Features:

- Lightweight construction
- Fitted with heavy-duty fixings to lock the chassis
- Certified and compliant with Australian Standards



Caterpillar 793F RH Corner Module

Part: 5504223

Construction: Heavy-duty steel

Part No. 5514223 - Protective coating

Part No. 5524223 - RH Corner Fender only
(OEM No. 300-4166)

Part No. 5534223 - Handrails only
(OEM No. 366-3292)

Features:

- Finished in CAT yellow
- Handrails painted black
- Certified and compliant with Australian Standards



Caterpillar 793F Chassis Handrails

Part: 5502341

Construction: Heavy-duty steel

Part: 793FLH1

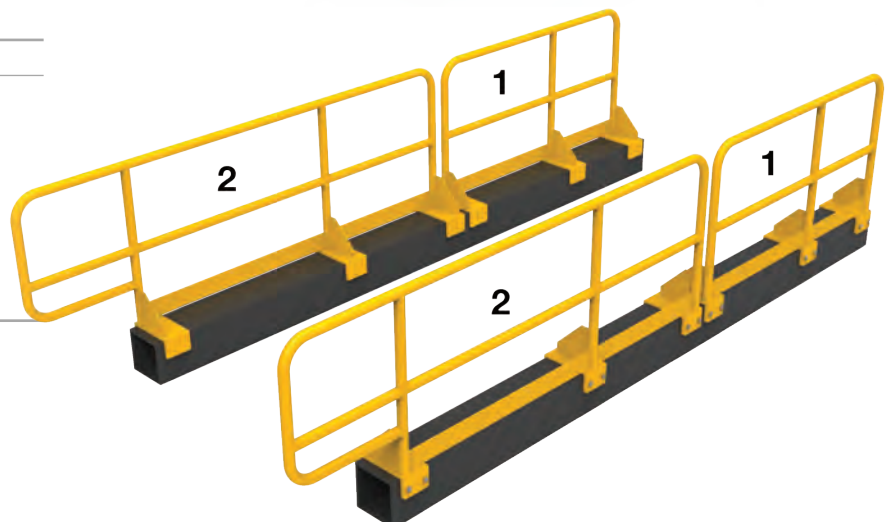
Part: 793FLH2

Part: 793FRH1

Part: 793FRH2

Features:

- Certified and compliant with Australian Standards
- 4 handrail components available
- Finished in CAT yellow



Caterpillar 793 Haul Truck

Caterpillar 793F Handrail Conversion

Part: 5501853 Complete Kit

OEM: 328-1140

Construction: Heavy-duty steel

Individual parts:

- 1) 5000282
- 2) 5000281
- 3) 5000284
- 4) 5000283

Features:

- Mounts in existing bolt holes on top
- Ladder handrails simply need welded stud plates for bolting handrails on
- Heavy duty construction



Caterpillar 793F Ladder Handrail Conversion

Part: 5600300 Complete kit

Construction: Heavy-duty steel

Individual parts:

- 1) 5600296 top right
- 2) 5600297 top left
- 3) 5600298 bottom right
- 4) 5600299 bottom left

Features:

- Cost saving over OEM
- Improved design over OEM



Caterpillar 793 Haul Truck

Caterpillar 793F Rear Chassis Handrail

Part: 5501294

Construction: Heavy-duty aluminium

Features:

- Threaded blocks clamp onto chassis and bolt on making the handrails removable
- TIG welded
- Powder coated Y-14 Safety Yellow



Caterpillar 793F Truck Tray Access Ladder

Part: 5501941

Construction: Heavy-duty steel

WLL: 150kg

Height: 900mm

Features:

- Access ladder positioned in the centre of the chassis
- Folding handrail for fall protection
- Finished in CAT yellow



Caterpillar 793F Fuel Tank

Part: 5600635

Construction: Heavy-duty steel

Features:

- Blasted and coated in high-performance Armour Flex Coating
- Eliminates the need for bash plates, one of the key enablers of corrosion
- Available for Bend-tech's Rotable Strip and Assess Program (see page 31)



Caterpillar 793 Haul Truck

Caterpillar 793F Fuel Tank Transport Frame

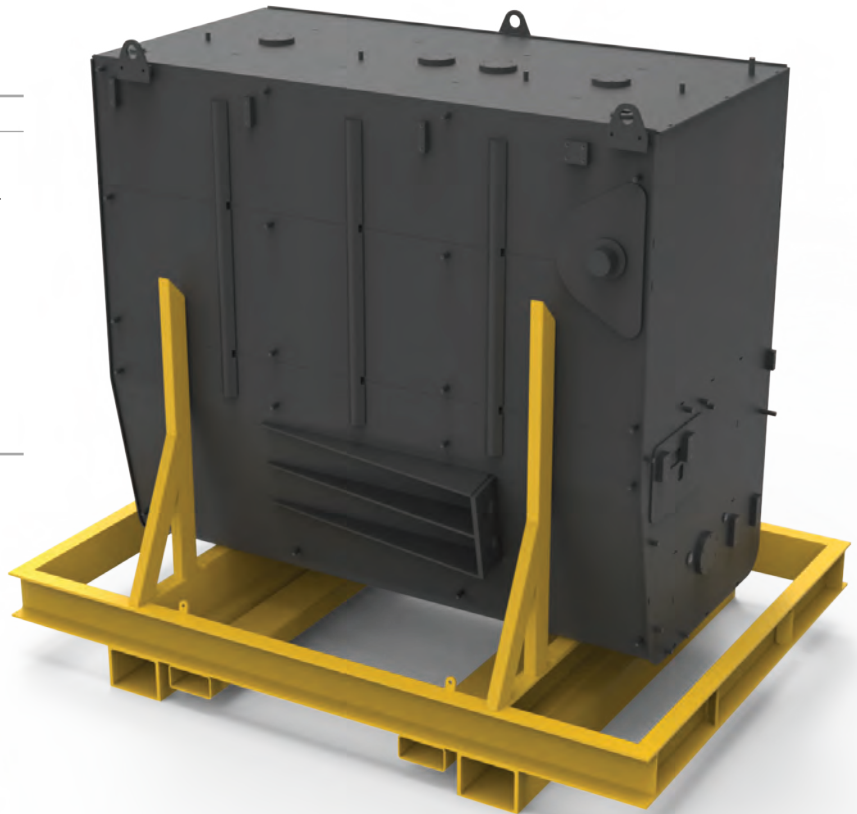
Part: 5504628

A designed and engineered Transport/ Storage Frame for the CAT 793F Fuel Tank. Maximises safety and efficiency during transport and storage.

Construction: Heavy-duty steel
WLL: 2T

Features:

- Forklift slots – 2 different sizes
- Rubber pads to keep tank from being scratched/dented in transit



Caterpillar 793F Fuel Tank Removal and Installation Frame

Part: 5506710

A designed and engineered removal/ installation frame for the CAT 793F Fuel Tank. Maximises safety and efficiency during removal and installation of tank.

Construction: Heavy-duty steel
WLL: 5T

Features:

- Fitted with forklift slots
- Ratchet straps
- Tie-down lugs
- Side support uprights with rubber lining
- Blasted, primed and finished in Y-14 Safety Yellow
- Designed, engineered and certified to Australian Standards



Caterpillar 854K Wheel Dozer



Caterpillar 854K Wheel Dozer

Caterpillar 854K Emergency Egress Ladder

Part: 5502306

Construction: Heavy-duty aluminium
ladder and slides
Heavy-duty steel
main frame

WLL: 150kg

Height: 2800mm

Features:

- Non-slip ladder nosing's
- Torqued gear units for controlled release and easy lifting



Caterpillar 994H Wheel Loader



ROX | OPEN CUT MACHINE PARTS

ROX 

OPEN CUT | UNDERGROUND | A DIVISION OF *Bendtech*.

bendtechgroup.com.au

Caterpillar 994H Wheel Loader

Caterpillar 994 Emergency Egress Ladder

Part: 5504157

Construction: Heavy-duty aluminium
ladder and slides
Heavy-duty steel
main frame

Features:

- Non-slip ladder nosing's
- Replace current construction (high strength etc) with these and take out of the features
- Torqued gear units for controlled release and easy lifting
- Certified and compliant with Australian Standards
- *Patent pending



Loader Boom Fall Protection

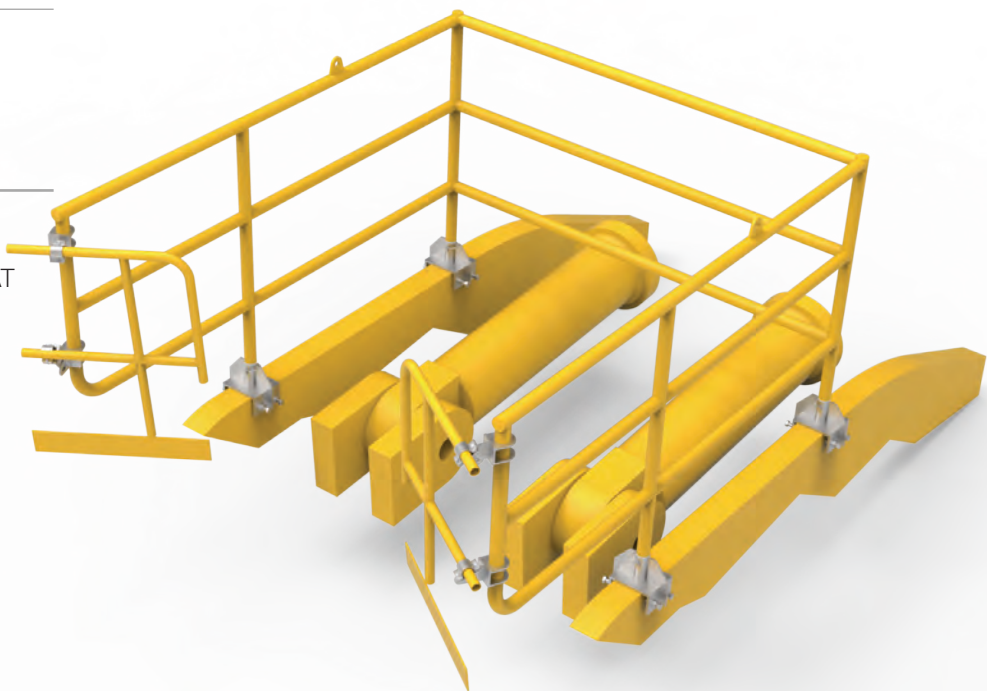
Part: 5503681

Construction: Heavy-duty steel
and aluminium

Height: 1180mm

Features:

- Clamps to chassis with hand bolts
- Powder coated in Y-14 Safety Yellow
- Suits both Komatsu WA1200 and CAT 994 loaders



Caterpillar 994H Wheel Loader

Caterpillar 7495 Boom Walkaway Handrails

Part: 5502627

Construction: Heavy-duty steel

Features:

- Certified and compliant with Australian Standards
- Replacement boom walkway handrails for the 7495 Rope Shovel.



“Eliminate downtime,
maximise performance”



Fuel Tank Refurbishment Process



Fuel tank is stripped back and NDT crack tested.

Repaired and pressure tested.

Delivery for fuel tank

- Fuel tank to be delivered to Bend-tech drained of all fuel or combustible, flammable liquids.
- Delivery docket sign off – ensure all supplied parts are documented and photographed.
- Bend-tech to check tank is drained of any fuel or combustible, flammable liquids.

Cleaning and visual inspection

- Ensure all openings are sealed prior to cleaning to prevent contamination of tank.
- High Pressure water clean external area of tank – all cleaning to be in accordance with EPA WA guidelines.
- Visual inspection of external and internal surfaces to check for damage.

- Visual inspection of external and internal welds to check for damage.
- Document and photograph any damage.
- Initial assessment - provide preliminary quote and scope of works, await client instruction.

Weld inspection and testing

- Abrasive clean the external surface of the tank
- NDT Inspection using MPI method to check for cracks in external welds or material.
- Thickness test of external shell of tank (if required).
- Document and photograph any cracks or damage.
- Finalise scope of works and quote, await client instruction.





Blasted and coated in high-performance Armour Flex Coating.

Can be supplied on a certified transport frame.

Full report prepared for the client, detailing all of the repairs and testing completed.

Fabrication and repairs

- Hot water clean internal of tank.
- Vent tank and fill with inert gas prior to any hot work.
- Fully remove any cracks using gouging and grinding tools.
- Thoroughly clean and vacuum internal tank space prior to carrying out repairs.
- Reweld cracks and carry out repairs as per AS1692-2006

Pressure testing

- Pressure test with Air to 35kPa unless noted otherwise and hold for 40 min.
- If the tank does not hold pressure, wet down external area with soapy water while under pressure and check for leaks.
- Repair any leaks and repeat pressure test.

Surface treatment

- External threads and uncoated areas to have a corrosion inhibitor applied
- Blast and wet coat and /Armour Flex Coating

Transportation

- All parts received as per delivery docket to be packed and returned with tank to the client.
- Photograph final transport arrangement

Bend-tech's Rotable Strip and Assess Program

Bend-tech will send you a new fuel tank to swap with your damaged tank. We then make the necessary repairs and hold stock in one of our facilities close to your site, ready to swap back when required.



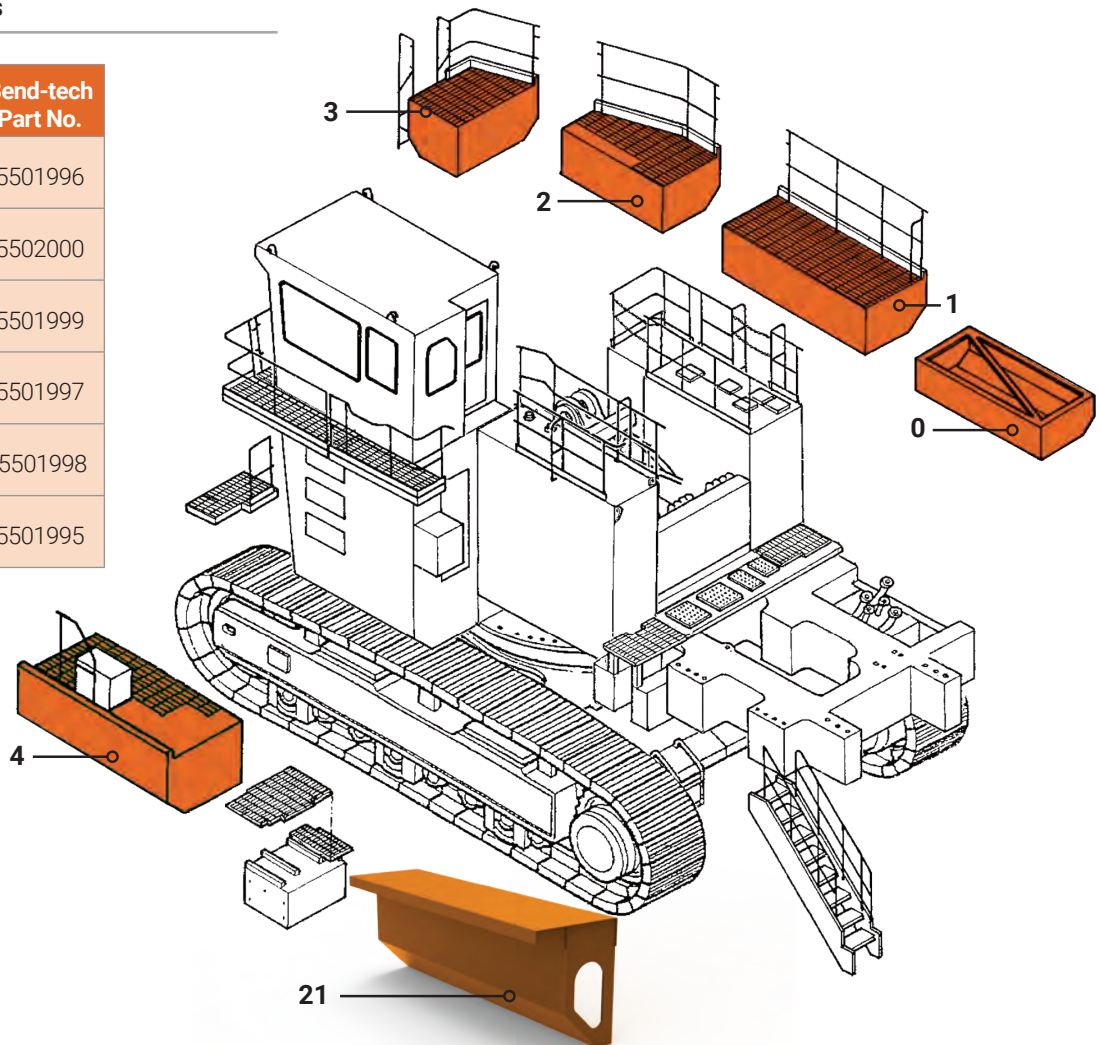
HITACHI EX1900 Excavator



Hitachi EX1900 Excavator

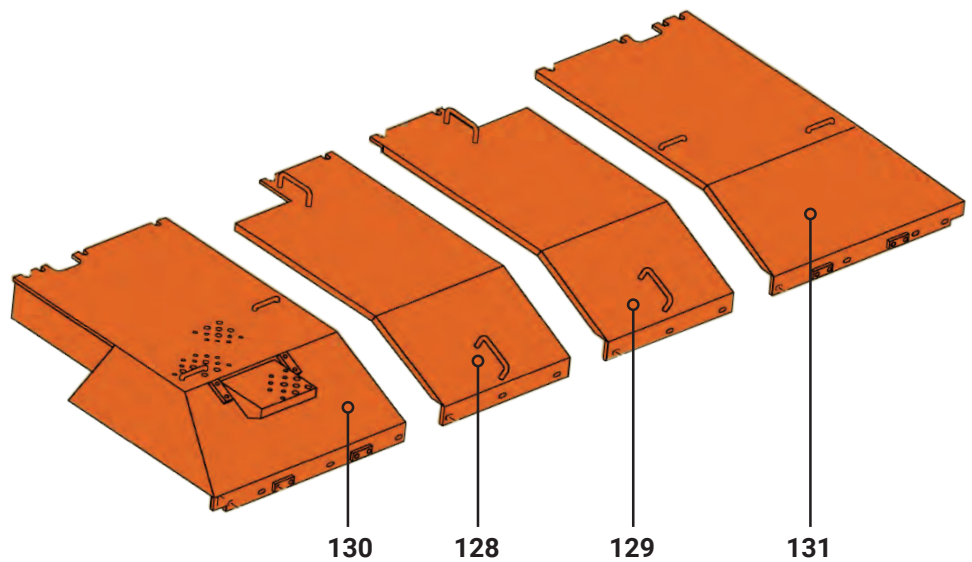
EX1900 - Fenders

	OEM Part No.	Bend-tech Part No.
4	5011515	5501996
3	6015286	5502000
2	6025284	5501999
0	7042059	5501997
1	6025283	5501998
21	6025792	5501995



EX1900 - Travel Motor Covers

	OEM Part No.	Bend-tech Part No.
128	7041385	5502031
129	7041388	5502032
130	6020529	5502033
131	6020552	5502034



Hitachi EX1900 Excavator



Hitachi EX1900 RH Fender 0

Part: 5501997

Construction: Heavy-duty steel

Features:

- Certified and compliant with Australian Standards
- Direct replacement to suit OEM No. **7042059**
- Stocked in Australia ready for immediate despatch



Hitachi EX1900 Middle Rear Panel 01

Part: 5501998

Construction: Heavy-duty steel

Features:

- Certified and compliant with Australian Standards
- Direct replacement to suit OEM No. **6025283**
- Stocked in Australia ready for immediate despatch



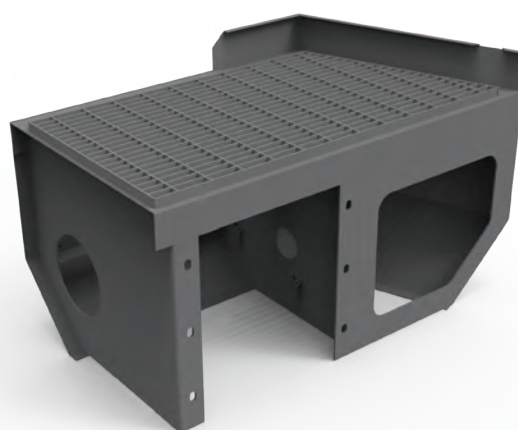
Hitachi EX1900 Middle Front Panel 02

Part: 5500152

Construction: Heavy-duty steel

Features:

- Certified and compliant with Australian Standards
- Direct replacement to suit OEM No. **6025284**
- Stocked in Australia ready for immediate despatch



Hitachi EX1900-6 RH Front Corner Panel 03

Part: 5502000

Construction: Heavy-duty steel

Features:

- Certified and compliant with Australian Standards
- Direct replacement to suit OEM No. **6025286**
- Stocked in Australia ready for immediate despatch



Hitachi EX1900 Excavator



Hitachi EX1900 LH Fender 4

Part: 5501996

Construction: Heavy-duty steel

Features:

- Certified and compliant with Australian Standards
- Direct replacement to suit OEM No. **5011515**
- Stocked in Australia ready for immediate despatch



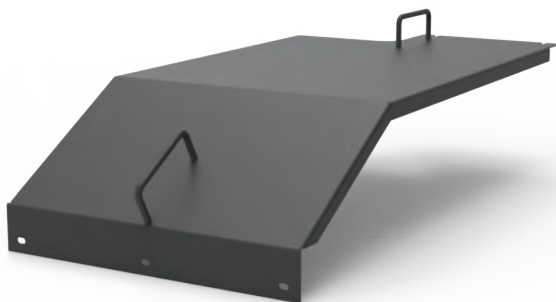
Hitachi EX1900 LH Fender 21

Part: 5501995

Construction: Heavy-duty steel

Features:

- Certified and compliant with Australian Standards
- Direct replacement to suit OEM No. **6025792**
- Stocked in Australia ready for immediate despatch



Hitachi EX1900 Travel Motor Cover 128

Part: 5502031

Construction: Heavy-duty steel

Features:

- Certified and compliant with Australian Standards
- Direct replacement to suit OEM No. **7041385**
- Stocked in Australia ready for immediate despatch



Hitachi EX1900 Travel Motor Cover 129

Part: 5502032

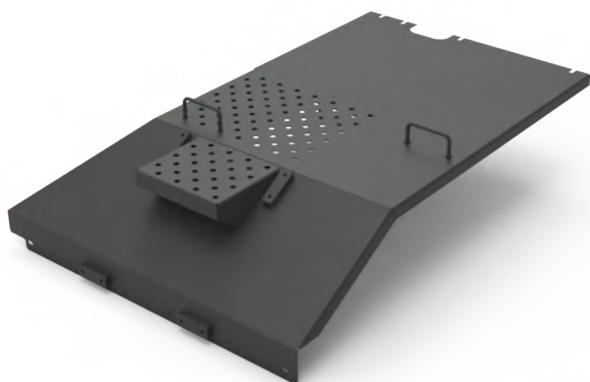
Construction: Heavy-duty steel

Features:

- Certified and compliant with Australian Standards
- Direct replacement to suit OEM No. **7041388**
- Stocked in Australia ready for immediate despatch



Hitachi EX1900 Excavator



Hitachi EX1900 Travel Motor Cover 130

Part: 5502033

Construction: Heavy-duty steel

Features:

- Certified and compliant with Australian Standards
- Direct replacement to suit OEM No. **6020529**
- Stocked in Australia ready for immediate despatch



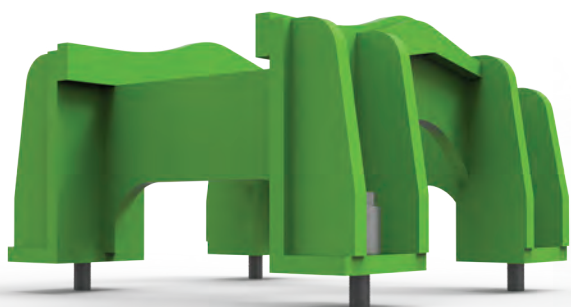
Hitachi EX1900 Travel Motor Cover 131

Part: 5502034

Construction: Heavy-duty steel

Features:

- Certified and compliant with Australian Standards
- Direct replacement to suit OEM No. **6020552**
- Stocked in Australia ready for immediate despatch



Hitachi EX1900-6 Track Frame Guard - Front

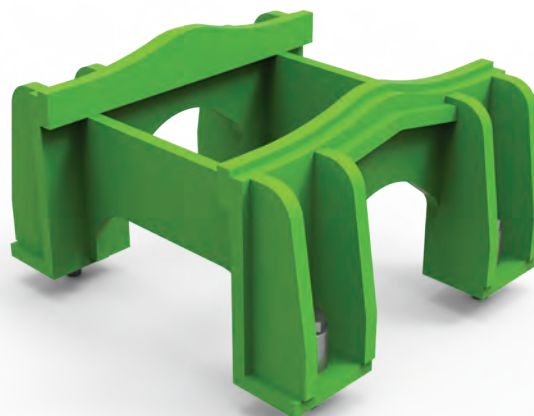
Part: 5502043

OEM No. 7026071

Track frame guards keep the tracks straight on the machine. Replaces existing OEM front track guards and bolts into existing holes.

Construction: Heavy-duty steel

- Bolts and spacers included



Hitachi EX1900-6 Track Frame Guard - Middle/Rear

Part: 5502044

OEM No. 7026024

Track frame guards keep the tracks straight on the machine. Replaces existing OEM front track guards and bolts into existing holes.

Construction: Heavy-duty steel

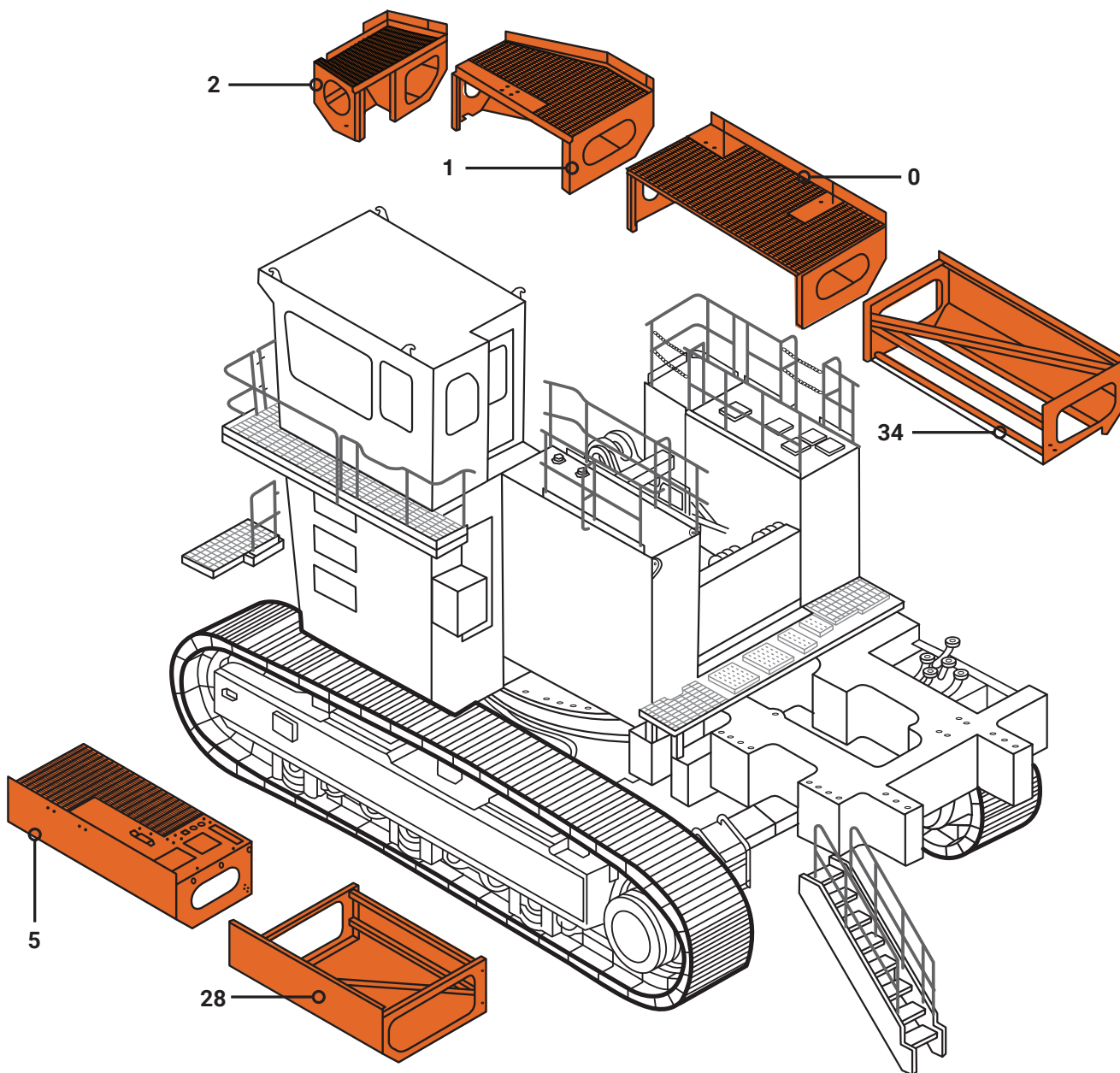
- Bolts and spacers included



HITACHI EX2500 Excavator



Hitachi EX2500 Excavator



	OEM Part No.	Bend-tech Part No.
14	7030106	5502053
0	5010976	5502050
1	5010985	5502051
2	6024996	5502052
5	5011381	5502054
28	7051609	5502055

“

High performance replacement covers, guards and fenders.

”



Hitachi EX2500 Excavator



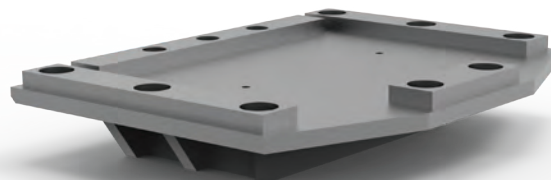
Hitachi EX2500 RH Fender 34

Part: 5502053

Construction: Heavy-duty steel

Features:

- Direct replacement to suit OEM No. **7030106**
- Stocked in Australia ready for immediate despatch
- Certified and compliant with Australian Standards



Hitachi EX2500 Bash Plate

Part: 5500152

Construction: Heavy-duty steel

Features:

- Modular design
- Painted to site or machine specific coloursh



Hitachi EX2500 Cylinder Protection

Part: 5503492

Features:

- Extremely robust, flexible rock deflection
- Minimise expensive damage and downtime
- Cost effective solution
- Provides full cover to the ram with no excess weight or restriction
- Easy to install



Hitachi EX2500-6 Stairway/Handrail Infill Panel Set

Part: 5504845

Infill panels are designed and engineered to provide greater safety when folding up main boarding ladder on Hitachi machines.

Features:

- Aluminum or hard plastic PE high density construction
- Supply materials and cut to shape



HITACHI EX3600 Excavator

ROX | OPEN CUT MACHINE PARTS



bendtechgroup.com.au

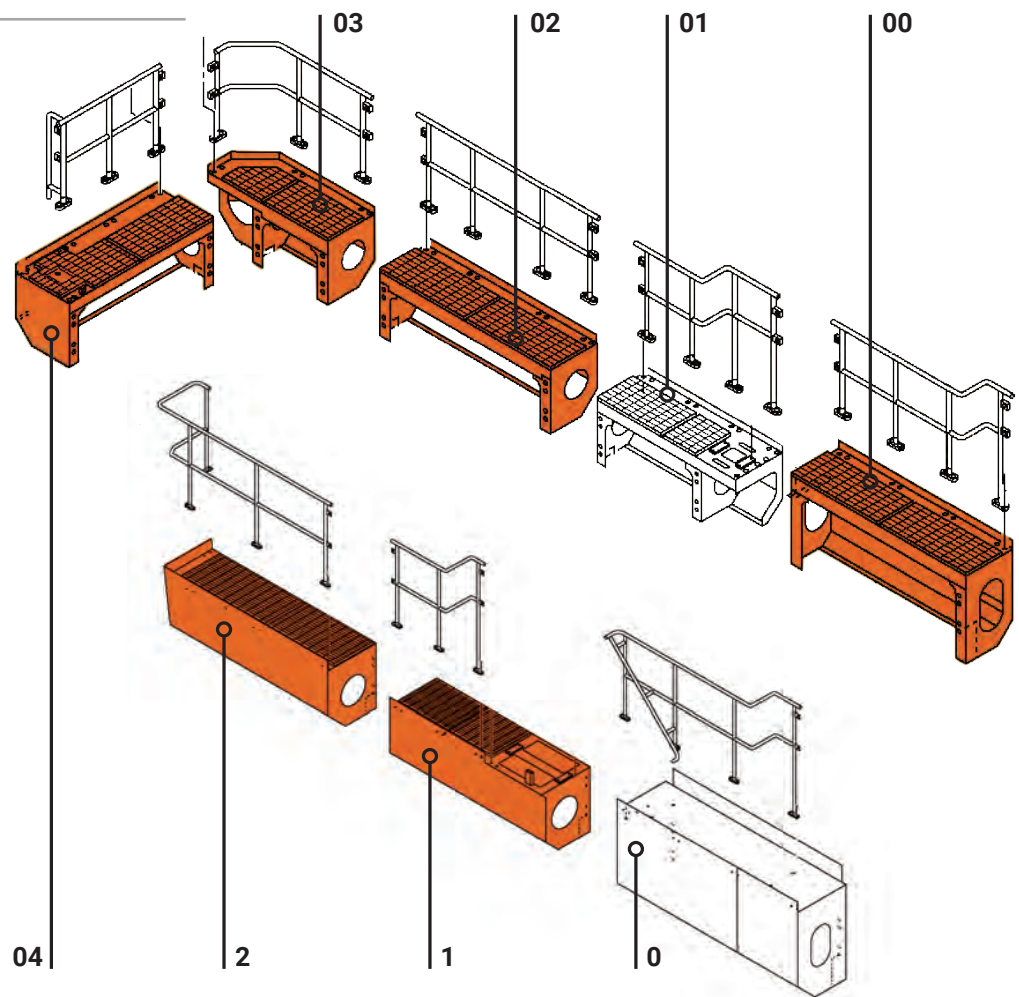
ROX 

OPEN CUT | UNDERGROUND | A DIVISION OF *Bendtech*

Hitachi EX3600 Excavator

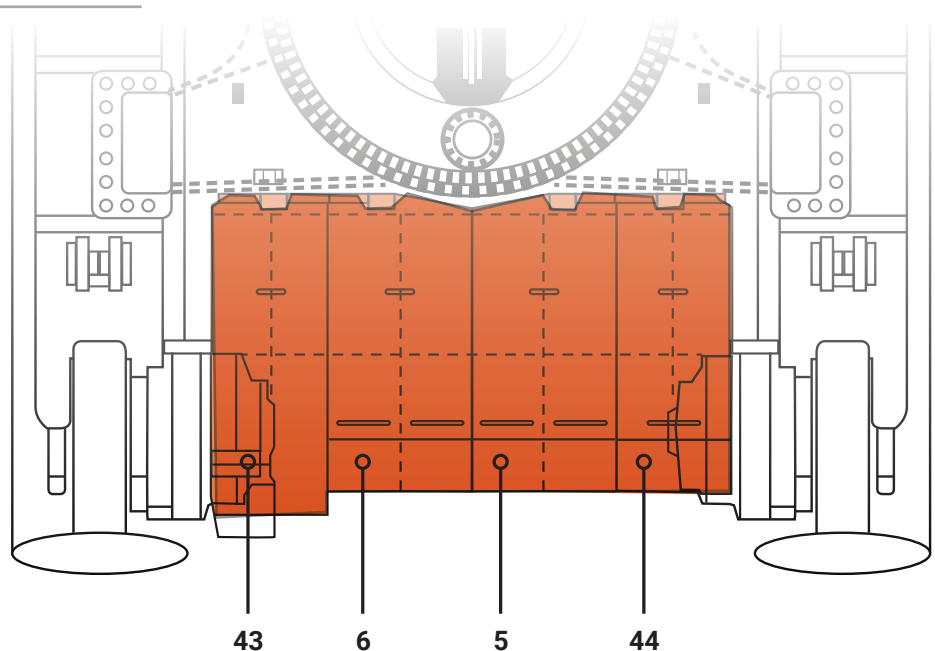
EX3600 - Fenders

	OEM Part No.	Bend-tech Part No.
00	5010764	5502018
01	6024653	5502027
02	6024652	5502029
03	6024651	5502019
04	5010787	5502030
0	5010763	5502028
1	6024950	5502026
2	6024655	5502024

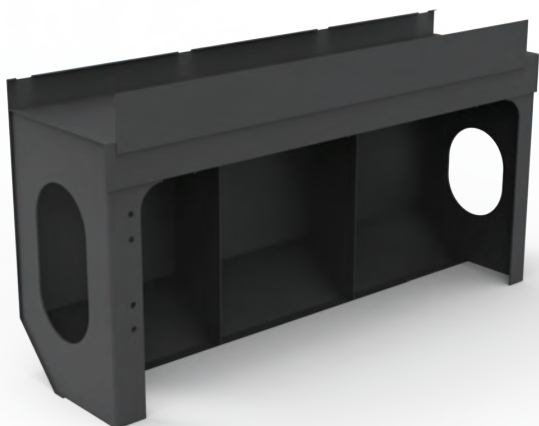


EX3600 - Travel Motor Covers

	OEM Part No.	Bend-tech Part No.
43	6020666	5502020
44	6020667	5502021
5	6022229	5502022
6	6022230	5502023



Hitachi EX3600 Excavator



Hitachi EX3600 LHS Fender 0

Part: 5503680

Construction: Heavy-duty steel

Features:

- Certified and compliant with Australian Standards
- Direct replacement to suit OEM No. **5010763**
- Stocked in Australia ready for immediate despatch



Hitachi EX3600 RH Front Fender 00

Part: 5502018

Construction: Heavy-duty steel

Features:

- Certified and compliant with Australian Standards
- Direct replacement to suit OEM No. **5010764**
- Stocked in Australia ready for immediate despatch



Hitachi EX3600 LH Fender 02

Part: 5502024

Construction: Heavy-duty steel

Features:

- Certified and compliant with Australian Standards
- Direct replacement to suit OEM No. **6024652**
- Stocked in Australia ready for immediate despatch



Hitachi EX3600 RHS Fender 03

Part: 5502019

Construction: Heavy-duty steel

Features:

- Certified and compliant with Australian Standards
- Direct replacement to suit OEM No. **6024651**
- Stocked in Australia ready for immediate despatch



Hitachi EX3600 Excavator



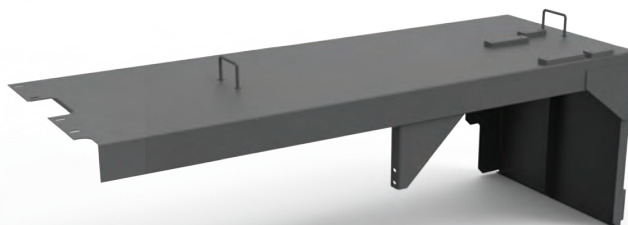
Hitachi EX3600 RH Fender 04

Part: 5502030

Construction: Heavy-duty steel

Features:

- Certified and compliant with Australian Standards
- Direct replacement to suit OEM No. **5010787**
- Stocked in Australia ready for immediate despatch



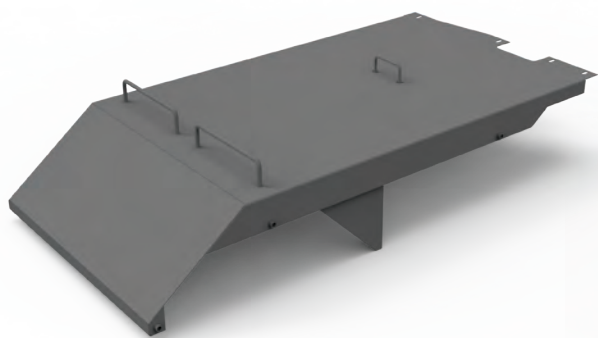
Hitachi EX3600 Travel Motor Cover 45

Part: 5502020

Construction: Heavy-duty steel

Features:

- Certified and compliant with Australian Standards
- Direct replacement to suit OEM No. **6020666**
- Stocked in Australia ready for immediate despatch



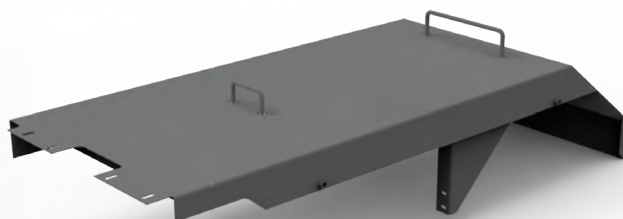
Hitachi EX3600 Travel Motor Cover 46

Part: 5502021

Construction: Heavy-duty steel

Features:

- Certified and compliant with Australian Standards
- Direct replacement to suit OEM No. **6020667**
- Stocked in Australia ready for immediate despatch



Hitachi EX3600 Travel Motor Cover 48

Part: 5502022

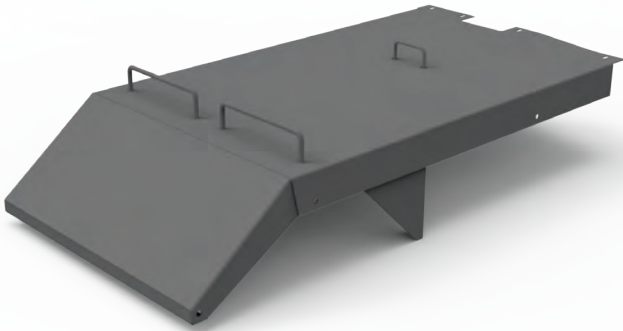
Construction: Heavy-duty steel

Features:

- Certified and compliant with Australian Standards
- Direct replacement to suit OEM No. **6022229**
- Stocked in Australia ready for immediate despatch



Hitachi EX3600 Excavator



Hitachi EX3600 RH Travel Motor Cover 49

Part: 5502023

Construction: Heavy-duty steel

Features:

- Certified and compliant with Australian Standards
- Direct replacement to suit OEM No. **6022230**
- Stocked in Australia ready for immediate despatch



Hitachi EX3600 Bash Plate

Part: 5502903

Construction: Heavy-duty steel

Length: 1135mm

Width: 760mm

Features:

- Certified and compliant with Australian Standards



Hitachi EX3600 Travel Transmission Guard Assembly LH

Part: 5600176

We offer high-performance replacement guards for the Hitachi EX3600, a part that is constantly damaged during operation

Construction: Heavy-duty steel



Hitachi EX3600 Travel Transmission Guard Assembly RH

Part: 5600175

We offer high-performance replacement guards for the Hitachi EX3600, a part that is constantly damaged during operation

Construction: Heavy-duty steel



Hitachi EX3600 Excavator

Hitachi EX3600 Cylinder Protection

Part: 5502294

Construction: Heavy-duty

Features:

- Extremely robust, flexible rock deflection
- Minimise expensive damage and downtime
- Cost effective solution
- Provides full cover to the ram with no excess weight or restriction
- Stocked off-the-shelf ready for despatch
- Easy to install



Hitachi EX3600 Travel Motor Cover Folding Handrails

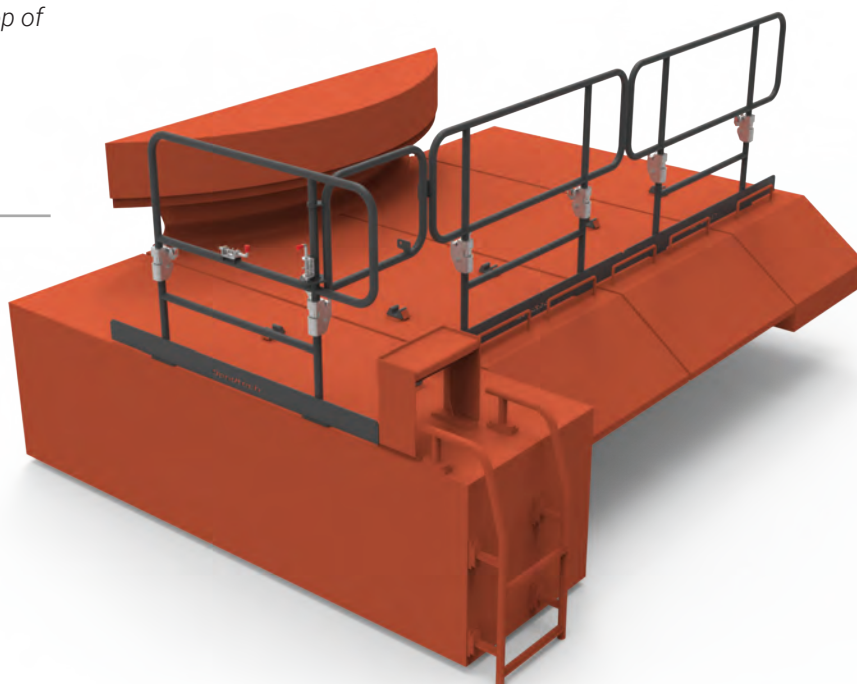
Part: 5503665

Provides a safe working space for the top of the Hitachi EX3600 travel motor covers.

Construction: Heavy-duty steel

Features:

- Certified and compliant with Australian Standards
- Mid-folding design



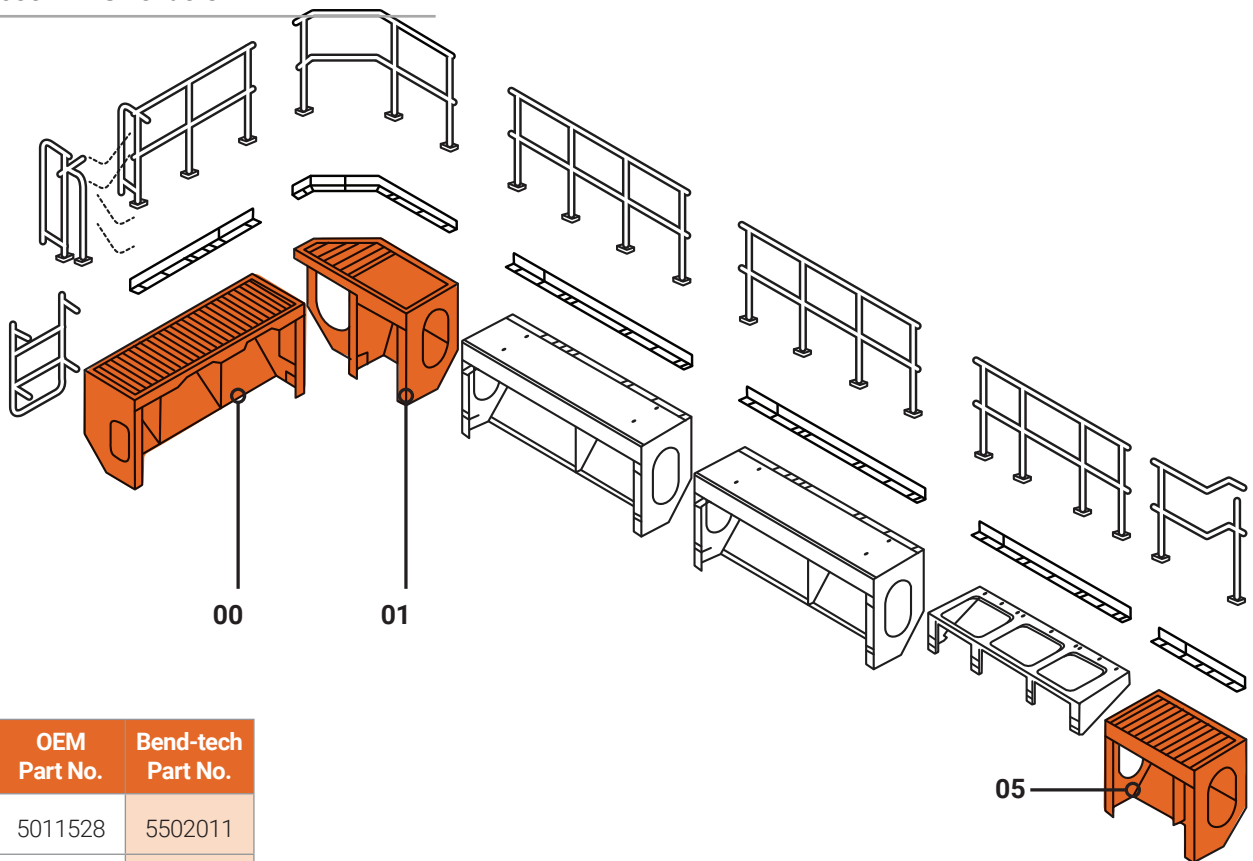
HITACHI EX5600 Excavator

ROX | OPEN CUT MACHINE PARTS



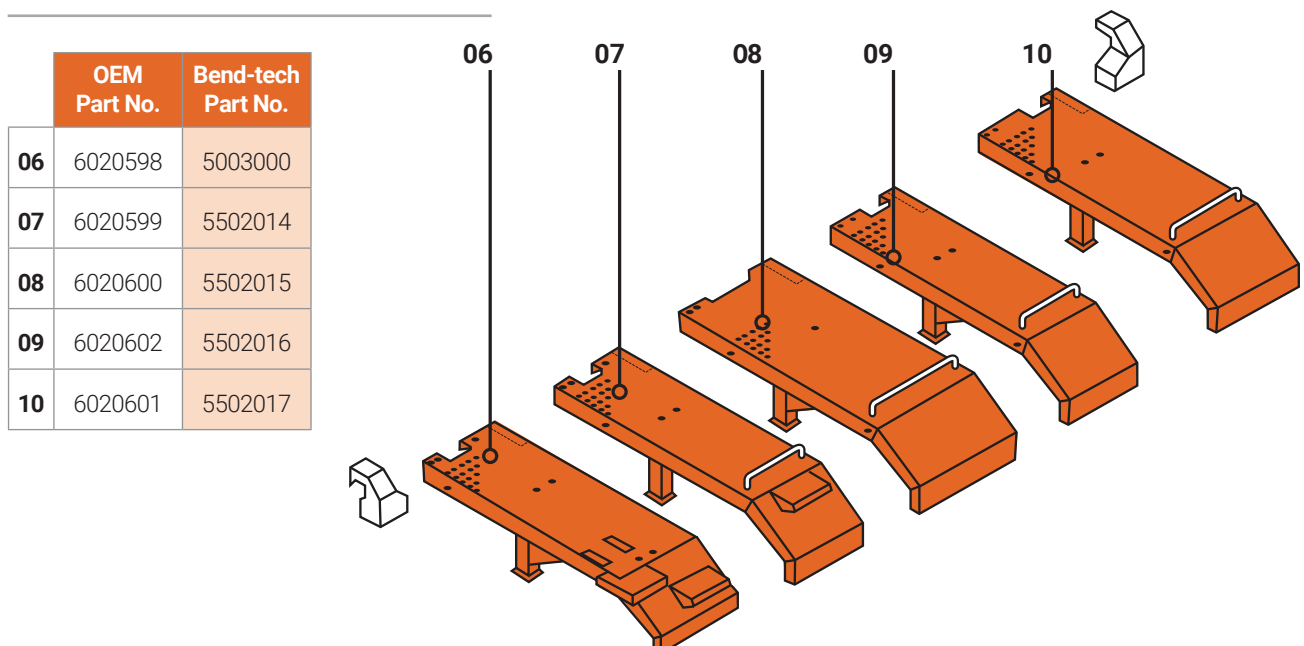
Hitachi EX5600 Excavator

EX5600 - RHS Fenders



	OEM Part No.	Bend-tech Part No.
00	5011528	5502011
01	5011529	5502012
05	6025669	5502013

EX5600 - Travel Motor Covers



	OEM Part No.	Bend-tech Part No.
06	6020598	5003000
07	6020599	5502014
08	6020600	5502015
09	6020602	5502016
10	6020601	5502017



Hitachi EX5600 Excavator



Hitachi EX5600 RHS Fender 00

Part: 5504220

Construction: Heavy-duty steel

Features:

- Certified and compliant with Australian Standards
- Direct replacement to suit OEM No. **5011528**
- Stocked in Australia ready for immediate despatch



Hitachi EX5600 RH Fender 01

Part: 5502012

Construction: Heavy-duty steel

Features:

- Certified and compliant with Australian Standards
- Direct replacement to suit OEM No. **5011529**
- Stocked in Australia ready for immediate despatch



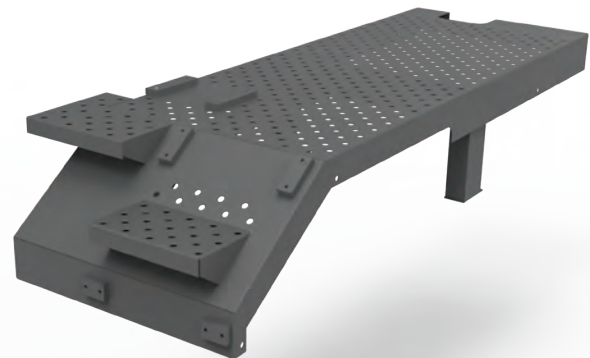
Hitachi EX5600 RH Fender 05

Part: 5502013

Construction: Heavy-duty steel

Features:

- Certified and compliant with Australian Standards
- Direct replacement to suit OEM No. **6025669**
- Stocked in Australia ready for immediate despatch



Hitachi EX5600 Travel Motor Cover 06

Part: 5003000

Construction: Heavy-duty steel

Features:

- Certified and compliant with Australian Standards
- Direct replacement to suit OEM No. **6020598**
- Stocked in Australia ready for immediate despatch



Hitachi EX5600 Excavator



Hitachi EX5600 Travel Motor Cover 07

Part: 5502014

Construction: Heavy-duty steel

Features:

- Certified and compliant with Australian Standards
- Direct replacement to suit OEM No. **6020599**
- Stocked in Australia ready for immediate despatch



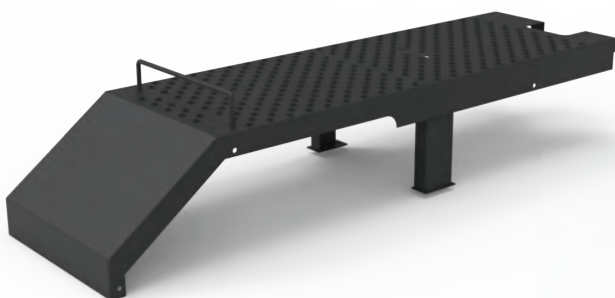
Hitachi EX5600 Travel Motor Cover 08

Part: 5502015

Construction: Heavy-duty steel

Features:

- Certified and compliant with Australian Standards
- Direct replacement to suit OEM No. **6020600**
- Stocked in Australia ready for immediate despatch



Hitachi EX5600 RHS Fender 09

Part: 5502016

Construction: Heavy-duty steel

Features:

- Certified and compliant with Australian Standards
- Direct replacement to suit OEM No. **6020602**
- Stocked in Australia ready for immediate despatch



Hitachi EX5600 Travel Motor Cover 10

Part: 5503816

Construction: Heavy-duty steel

Features:

- Certified and compliant with Australian Standards
- Direct replacement to suit OEM No. **6020601**
- Stocked in Australia ready for immediate despatch



Hitachi EX5600 Excavator



Hitachi EX5600 Track Tension Gauge

Part: 5600220

Placed on the track frame with magnets. The dangling chains are reference points which indicate when the track is sufficiently tensioned.

Construction: Heavy-duty steel

Features:

- Magnetic



Hitachi EX5600 Cylinder Protection

Part: 5503215

Features:

- Extremely robust, flexible rock deflection
- Minimise expensive damage and downtime
- Provides full cover to the ram with no excess weight or restriction
- Stocked off-the-shelf ready for despatch
- Easy to install

Hitachi EX5600 Travel Motor Cover Folding Handrails

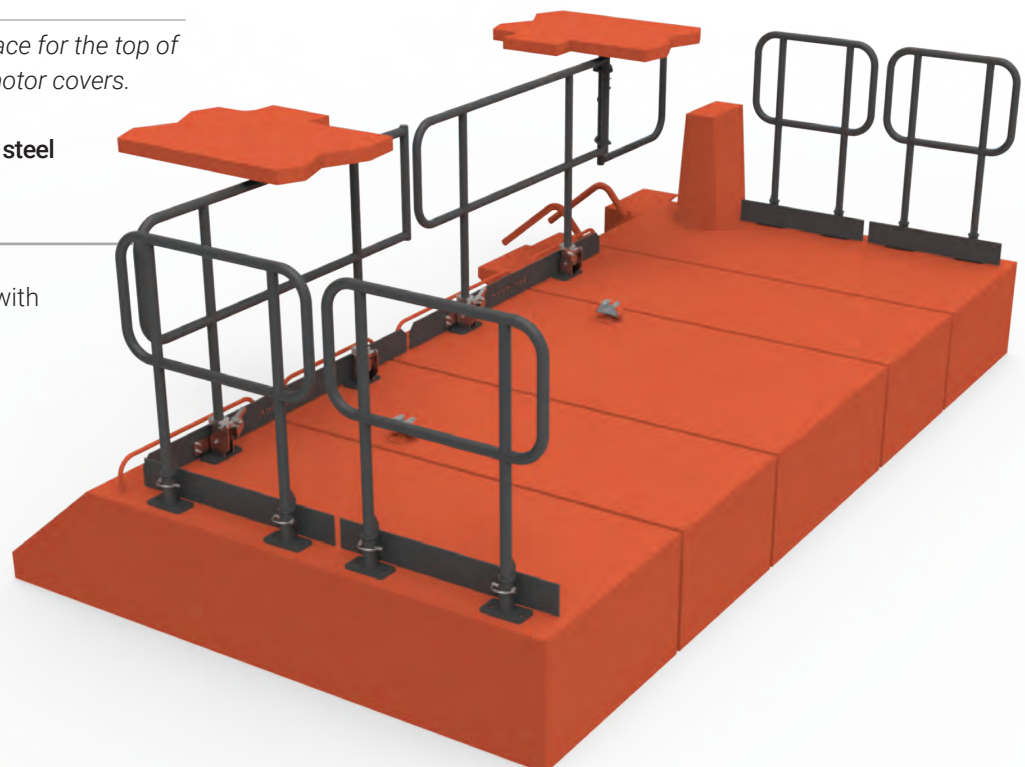
Part: 5503709

Provides a safe working space for the top of the Hitachi EX5600 travel motor covers.

Construction: Heavy-duty steel

Features:

- Mid-folding design
- Certified and compliant with Australian Standards



ROX | OPEN CUT MACHINE PARTS

HITACHI EX8000 Excavator



bendtechgroup.com.au

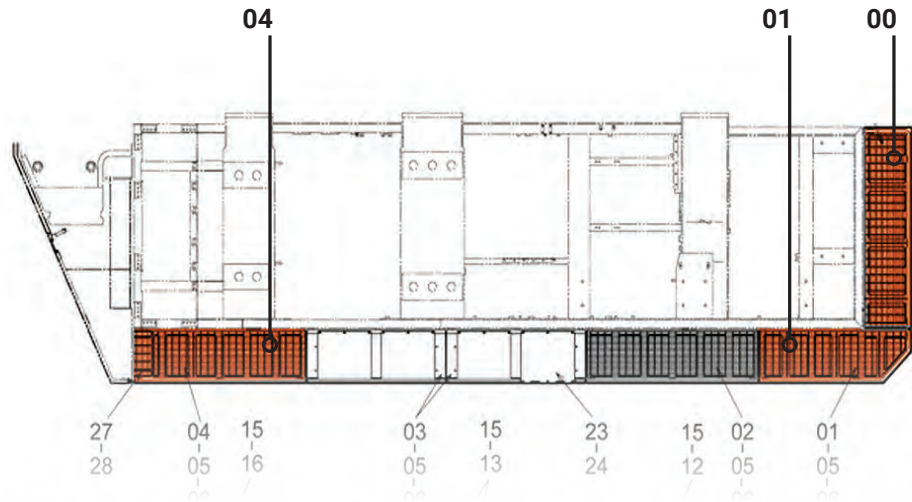


OPEN CUT | UNDERGROUND | A DIVISION OF *Bendtech*.

Hitachi EX8000 Excavator

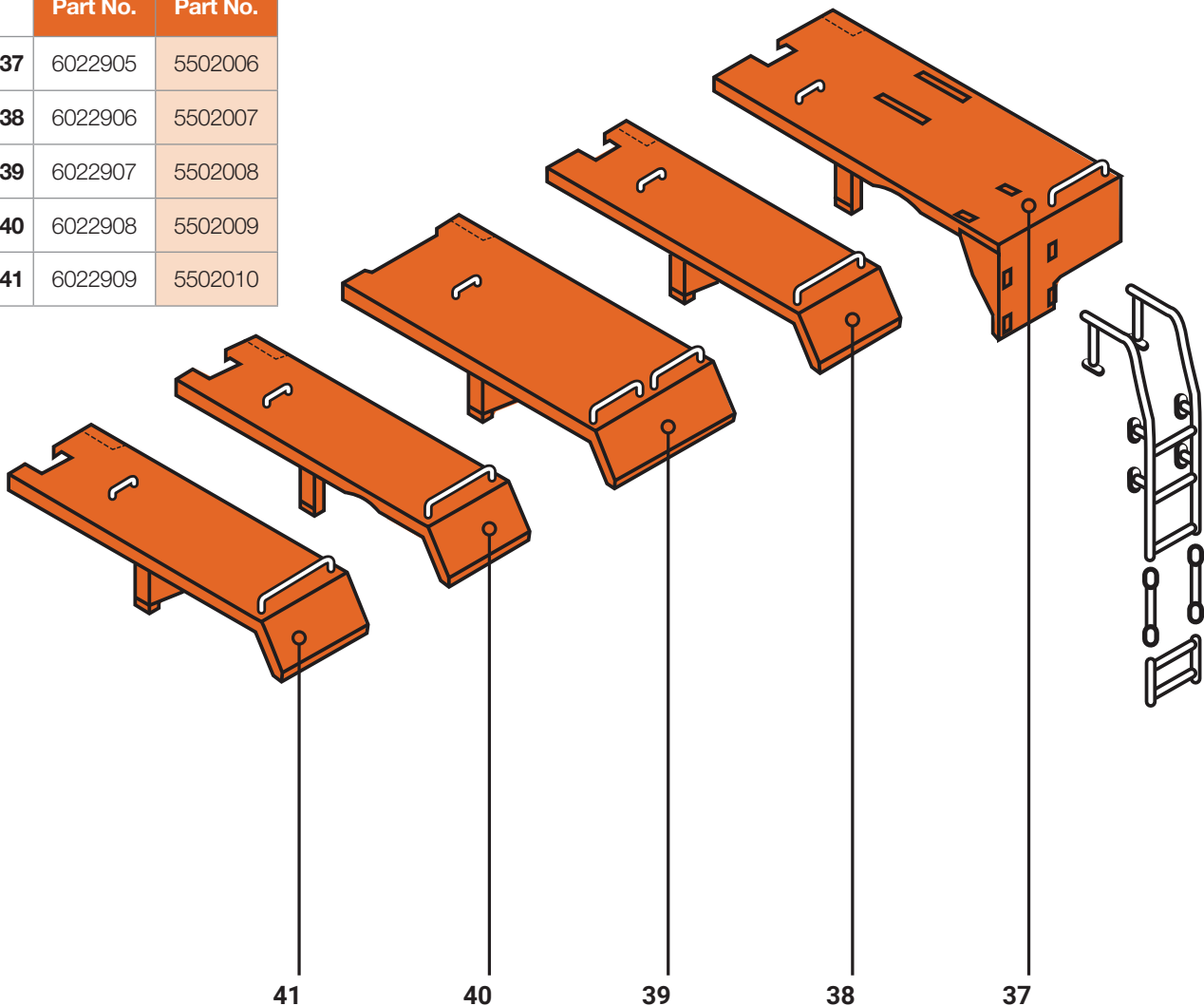
EX8000 - RHS Fenders

	OEM Part No.	Bend-tech Part No.
00	5011698	5502003
01	5011689	5502004
04	5011686	5502005



EX8000 Travel Motor Covers

	OEM Part No.	Bend-tech Part No.
37	6022905	5502006
38	6022906	5502007
39	6022907	5502008
40	6022908	5502009
41	6022909	5502010



Hitachi EX8000 Excavator



Hitachi EX8000 Travel Motor Cover 37

Part: 5502006

Construction: Heavy-duty steel

Features:

- Certified and compliant with Australian Standards
- Direct replacement to suit OEM No. **6022905**
- Stocked in Australia ready for immediate despatch



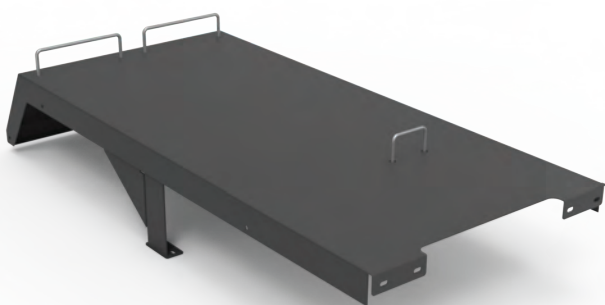
Hitachi EX8000 Travel Motor Cover 38

Part: 5502007

Construction: Heavy-duty steel

Features:

- Certified and compliant with Australian Standards
- Direct replacement to suit OEM No. **6022906**
- Stocked in Australia ready for immediate despatch



Hitachi EX8000 Travel Motor Cover 39

Part: 5504238

Construction: Heavy-duty steel

Features:

- Certified and compliant with Australian Standards
- Direct replacement to suit OEM No. **6022907**
- Stocked in Australia ready for immediate despatch



Hitachi EX8000 Travel Motor Cover 40

Part: 5502009

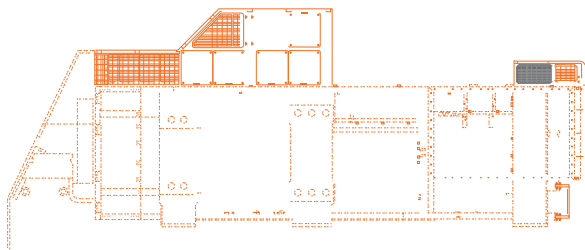
Construction: Heavy-duty steel

Features:

- Certified and compliant with Australian Standards
- Direct replacement to suit OEM No. **6022908**
- Stocked in Australia ready for immediate despatch



Hitachi EX8000 Excavator



Hitachi EX8000 LH Fender 00

Part: 5502070

Construction: Heavy-duty steel

Features:

- Certified and compliant with Australian Standards
- Direct replacement to suit OEM No. **6025908**
- Stocked in Australia ready for immediate despatch



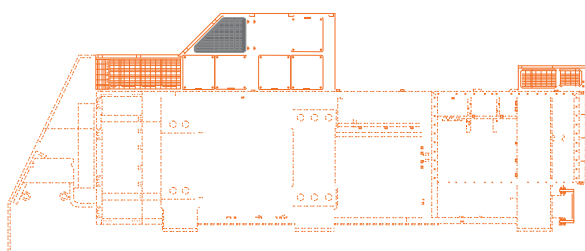
Hitachi EX8000 RH Fender 01

Part: 5502004

Construction: Heavy-duty steel

Features:

- Certified and compliant with Australian Standards
- Direct replacement to suit OEM No. **5011689**
- Stocked in Australia ready for immediate despatch



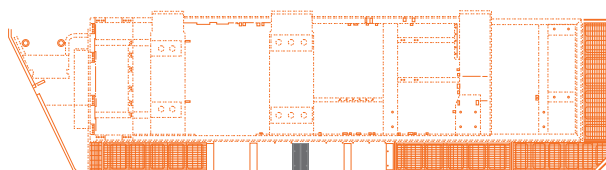
Hitachi EX8000 LH Fender 02

Part: 5502071

Construction: Heavy-duty steel

Features:

- Certified and compliant with Australian Standards
- Direct replacement to suit OEM No. **5011677**
- Stocked in Australia ready for immediate despatch



Hitachi EX8000 RH Fender 03

Part: 5502062

Construction: Heavy-duty steel

Features:

- Certified and compliant with Australian Standards
- Direct replacement to suit OEM No. **5009523**
- Stocked in Australia ready for immediate despatch



Hitachi EX8000 Excavator



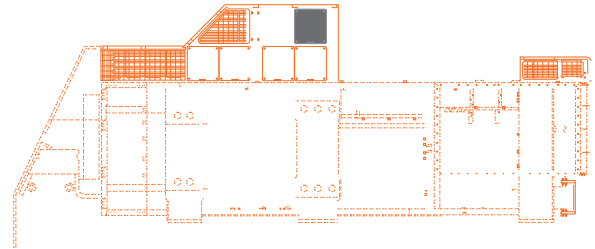
Hitachi EX8000 RH Fender 04

Part: 5502005

Construction: Heavy-duty steel

Features:

- Certified and compliant with Australian Standards
- Direct replacement to suit OEM No. **5011686**
- Stocked in Australia ready for immediate despatch



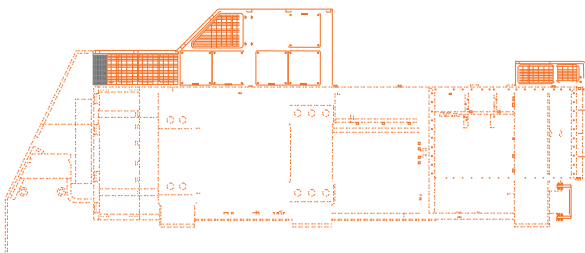
Hitachi EX8000 LH Cover 20

Part: 5502077

Construction: Heavy-duty steel

Features:

- Certified and compliant with Australian Standards
- Direct replacement to suit OEM No. **8096306**
- Stocked in Australia ready for immediate despatch



Hitachi EX8000 LH Step 23

Part: 5502078

Construction: Heavy-duty steel

Features:

- Certified and compliant with Australian Standards
- Direct replacement to suit OEM No. **8111294**
- Stocked in Australia ready for immediate despatch



Hitachi EX8000 RH Fender 01

Part: 5502003

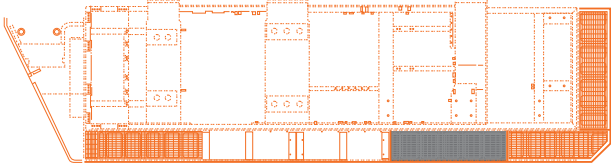
Construction: Heavy-duty steel

Features:

- Certified and compliant with Australian Standards
- Direct replacement to suit OEM No. **5011698**
- Stocked in Australia ready for immediate despatch



Hitachi EX8000 Excavator



Hitachi EX8000 RH Fender 02

Part: 5502061

Construction: Heavy-duty steel

Features:

- Certified and compliant with Australian Standards
- Direct replacement to suit OEM No. **5011687**
- Stocked in Australia ready for immediate despatch



Hitachi EX8000 Travel Motor Cover 41

Part: 5502010

Construction: Heavy-duty steel

Features:

- Certified and compliant with Australian Standards
- Direct replacement to suit OEM No. **6022909**
- Stocked in Australia ready for immediate despatch

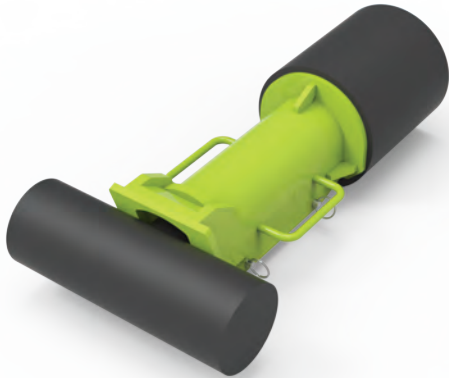
“Eliminate downtime,
maximise performance”



Epiroc D65 Surface Drill



Epiroc D65 Surface Drill



Epiroc D65 Drill Boom Raise Ram Clamp

Part: 5503365

Construction: Heavy-duty steel

WLL: 30 Tonne

Features:

- Clamps to the boom raise cylinder when extended
- Manual handling weights of 14kg max
- Instalation time under 1 minute



Epiroc D65 Drill Rear Jack Stand Clamp

Part: 5503499

Construction: Heavy-duty steel

WLL: 30 Tonne

Features:

- Easy to install and lock into place
- Load rated handles for hoist install

Epiroc D65 Clamp Storage Toolbox

Part: 5504044

Provides a safe working space for the top of the Hitachi EX3600 travel motor covers.

Construction: Heavy-duty steel

Height: 500mm

Features:

- Holds 3 x Rear Jackstand Clamps (5503499) and 1 x Boom Raise Clamp (5503365).
- Gas struts for lid
- Key lock with T handles
- Heavy-duty hydrocarbon resistant foam cut out
- Each tool has a specifically CNC routed cutout
- Fitted with forklift slots
- Laser cut ID plate attached to top of lid
- Specific signage and stickers available on request
- Forklift slots



Komatsu Machine Range



Komatsu 830E

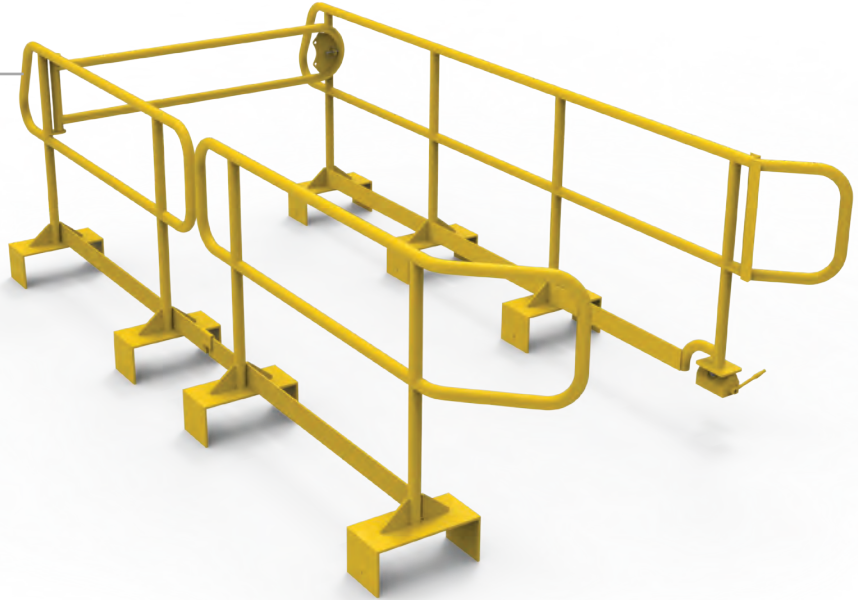
Komatsu 830E Chassis Handrail

Part: 5500483

Construction: Heavy-duty aluminium

Features:

- Handrails bolt to the chassis rails for protection when working in the chassis area
- Aluminium construction for easy lifting in and out
- Fitted with lock bolts to ensure strong fixing to the chassis



“Eliminate downtime,
maximise performance”



Komatsu 930E

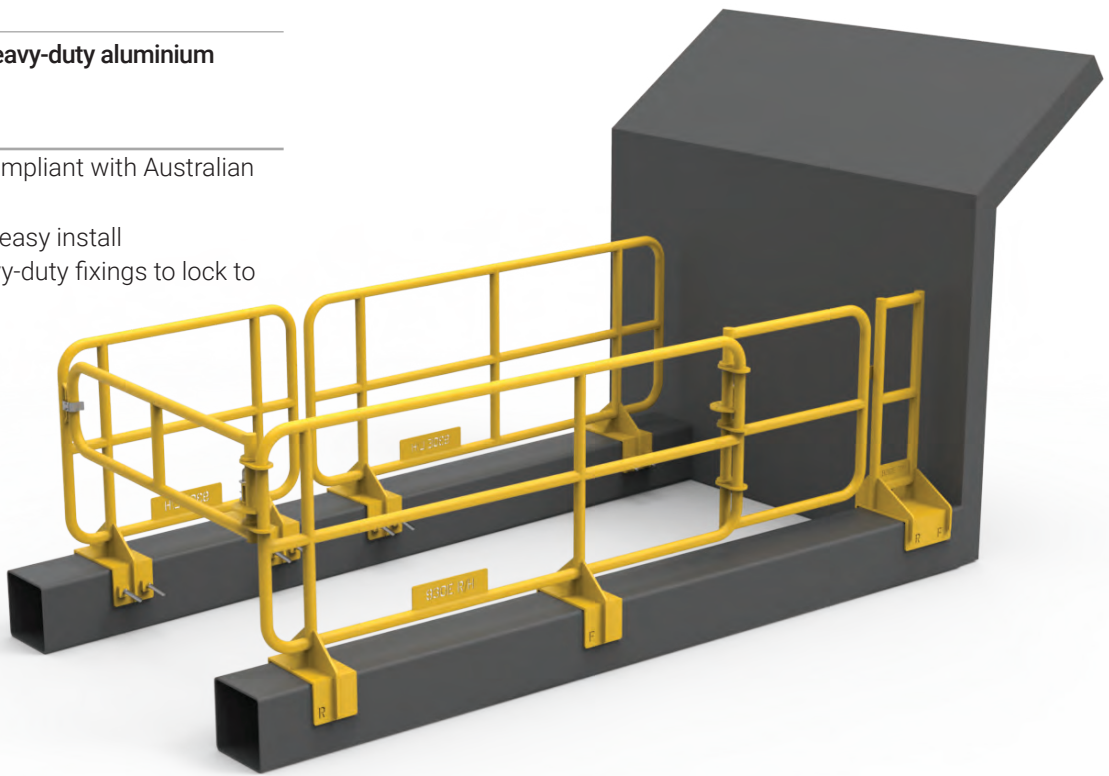
Komatsu 930E Chassis Handrail Set

Part: 5501069

Construction: Heavy-duty aluminium

Features:

- Certified and compliant with Australian Standards
- Lightweight for easy install
- Fitted with heavy-duty fixings to lock to the chassis



Komatsu 930E Chassis Handrail Storage Stand

Part: 5501184

Construction: Heavy-duty steel

Features:

- Certified and compliant with Australian Standards
- Finished in Y-14 Safety Yellow
- Forklift slots



Komatsu WA1200 Wheel Loader

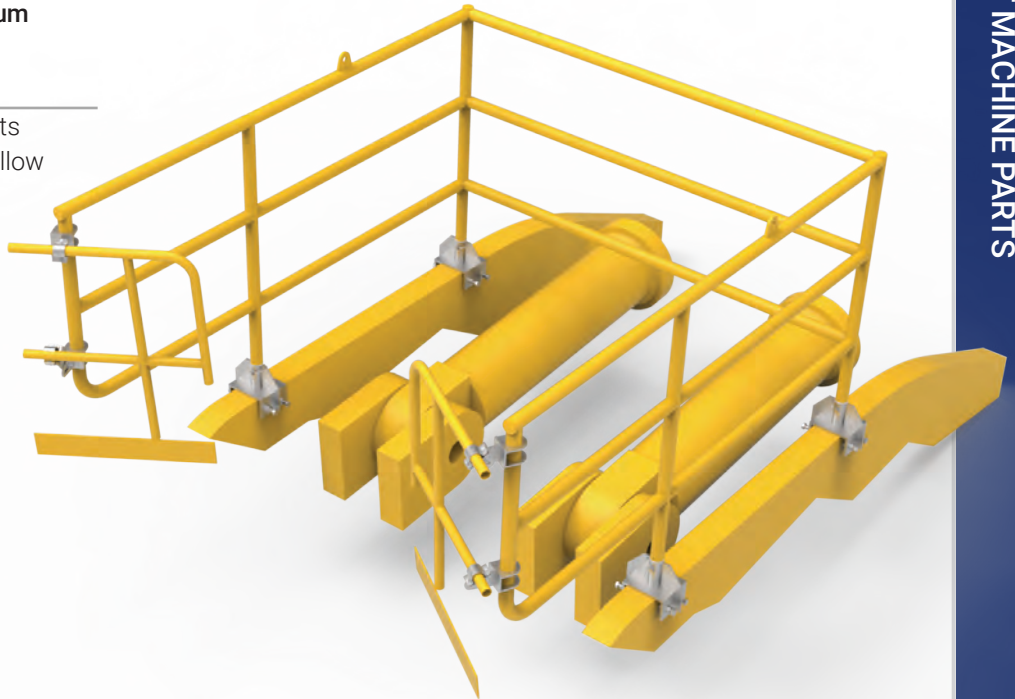
Loader Boom Fall Protection

Part: 5503681

Construction: Heavy-duty aluminium

Features:

- Clamps to chassis with hand bolts
- Powder coated in Y-14 Safety Yellow
- Suits both Komatsu WA1200 and CAT 994 loaders



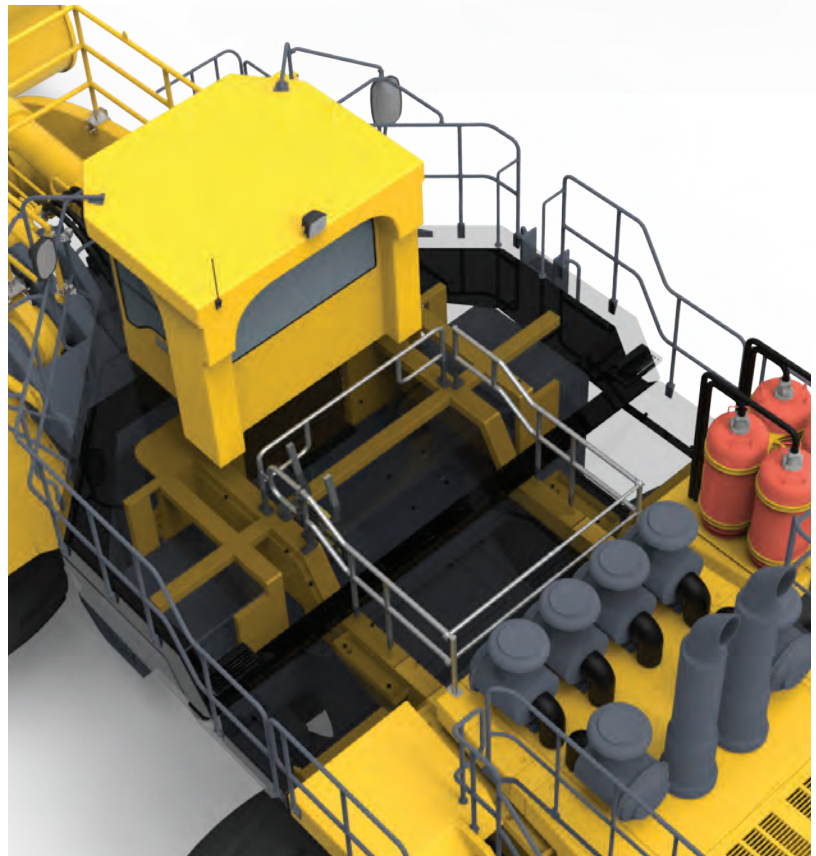
Komatsu WA1200 Access and Protection

Part: 5501654

Construction: Heavy-duty aluminium

Features:

- Weld on steel base plates
- Handrails thread on to steel blocks welded to WA1200
- Handrails finished in Y-14 Safety Yellow



Komatsu PC 5500

Komatsu PC 5500 Boom Handrails

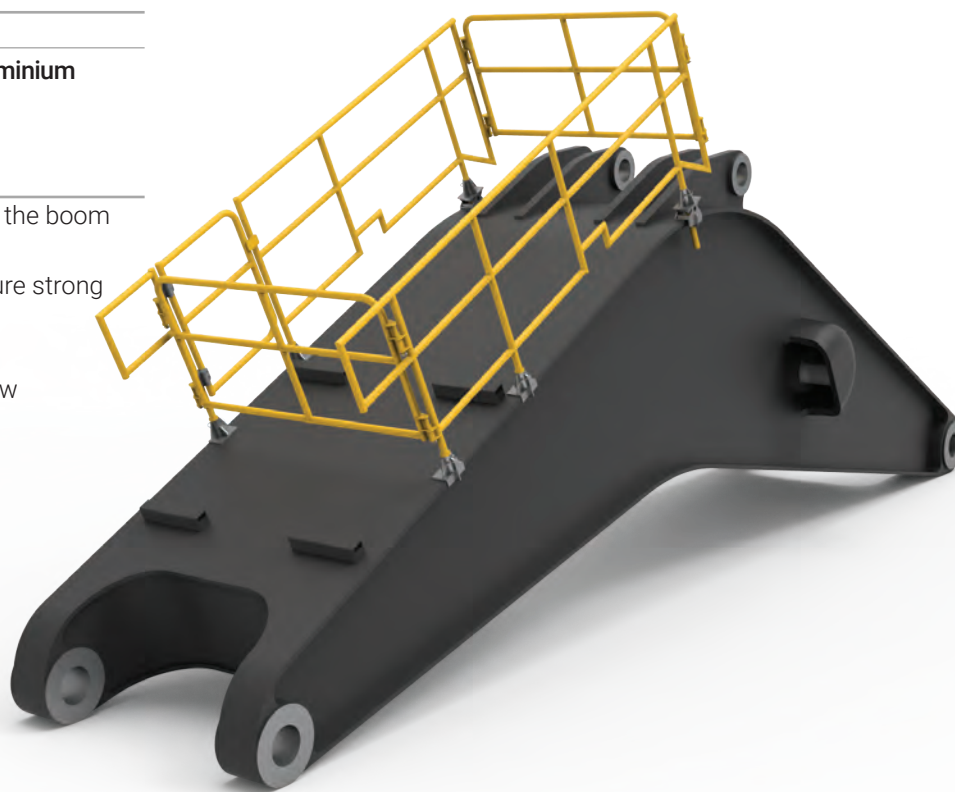
Part: 5502442

Construction: Heavy-duty aluminium

Height: 1365mm

Features:

- Handrails clamp to edges of the boom for protection
- Fitted with lock bolts to ensure strong fixing to the chassis
- Self-closing gates
- Finished in Y-14 Safety Yellow



LeTourneau L1850 Wheel Loader

ROX | OPEN CUT MACHINE PARTS



bendtechgroup.com.au

ROX 
OPEN CUT | UNDERGROUND | A DIVISION OF *Bendtech*.

LeTourneau L1850 Wheel Loader

LeTourneau L1850 Fold Down Ladder

Part: 5502240

Construction: Predominantly lightweight aluminium

Features:

- Gas Strut System for easy fold-up
- Handles to assist fold-up
- Welds to machine as a permanent solution



LeTourneau L2350 Artic Area Safety Gate

Part: 5602007

Construction: Heavy-duty steel
Height: 1535mm

Features:

- Certified and compliant with Australian Standards
- Hi-spec surface treatment finish in machine colour or Kawasaki green
- Enhance personnel protection in the artic area



Liebherr 9400 Excavator



ROX | OPEN CUT MACHINE PARTS

Liebherr 9400 Excavator

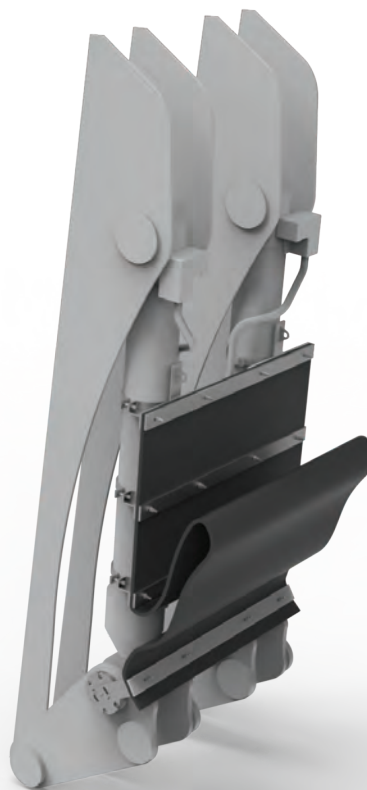
Liebherr 9400 Cylinder Protection Kit

Part: 5503672

Construction: Heavy-duty steel

Features:

- Extremely robust, flexible rock deflection
- Provides full cover to the ram with no excess weight or restriction
- Stocked off-the-shelf ready for despatch
- Easy to install



Contact

PERTH: 08 9459 8600

ADELAIDE: 08 8231 1513

DARWIN: 08 8963 5621

KALGOORLIE: 08 9021 8300

NEWMAN: 08 9175 1164

MOUNT ISA: 07 4743 6458

bendtechgroup.com.au



All manufacturers names, numbers, symbols, photos and description are for reference purpose only and do not imply that parts listed are products of the manufacturers

ROX | OPEN CUT MACHINE PARTS | 08/2023

